

Global Network



Sumitomo Heavy Industries, Ltd.
Industrial Machinery Segment, Plastics Machinery Div.

● TOKYO	Sumitomo Heavy Industries, Ltd. Industrial Machinery Segment, Plastics Machinery Div., Global Sales Dept. 1-1, Osaki 2-chome, Shinagawa-ku, Tokyo, 141-6025, Japan Tel:+81-3-6737-2576 Fax:+81-3-6866-5176
● CHIBA	Sumitomo Heavy Industries, Ltd. Chiba Works/Technology Center 731-1, Naganumahara, Inage-ku, Chiba City, 263-0001, Japan Tel:+81-43-420-1471 Fax:+81-43-420-1591
● U.S.A.	Sumitomo (SHI) Demag Plastics Machinery North America, Inc. Atlanta Office/Technology Center 410 Horizon Dr., Suite 200, Suwanee, GA 30024, United States Tel:+1-770-447-5430 Fax:+1-678-990-1716 Sumitomo (SHI) Demag Plastics Machinery North America, Inc. Cleveland Office 17909 Cleveland Parkway, Cleveland, OH 44135, United States Tel:+1-440-876-8960 Fax:+1-440-876-4383 Sumitomo (SHI) Demag Plastics Machinery North America, Inc. Chicago Office/Facility and Tech Center 1177 Corporate Grove Dr. Buffalo Grove, IL 60089, United States Tel:+1-847-947-9569 Sumitomo (SHI) Demag Plastics Machinery North America, Inc. Anaheim Office/Training and Demo Center 1130 N. Armando St. Anaheim, CA 92806, United States SHI Plastics Machinery de Mexico, S.A. DE. C.V. Monterrey Office Ignacio Sepulveda 124, Seccion 7, Edificio 1 Parque Industrial Kalos Encarnacion Colonia La Encarnacion, Apodaca, N.L. C.P. 66633, Mexico Tel:+52-81-8356-1714, -1720, -1726 Fax:+52-81-8356-1710 SHI Plastics Machinery de Mexico, S.A. DE. C.V. Leon Office Plaza San Martin Blvd Aeropuerto N° 849, Local "E" 3102, Col. San Jose el Alto, León Guanajuato CP 7545, Mexico Tel:+52-477-179-1730
● MEXICO	Sumitomo (SHI) Demag do Brasil Comercio de Máquinas para Plásticos Ltda. Rodovia do Açúcar (SP-075), km 26-Jd. Oliveira-Itu/SP-Cep: 13312-500, Brazil Tel:+55-11-4403-9286
● BRAZIL	Sumitomo (SHI) Demag Plastics Machinery GmbH (Schwaig) Altdorfer Str. 15 90571 Schwaig, Germany Tel:+49-911-5061-0 Fax:+49-911-5061-265
● GERMANY	Sumitomo (SHI) Demag Plastics Machinery GmbH (Roßleben-Wiehe) Donndorfer Str. 3 06571 Roßleben-Wiehe, Germany Tel:+49-34672-97-0 Fax:+49-34672-97-333
● UNITED KINGDOM	Sumitomo (SHI) Demag Plastics Machinery (UK) Ltd. Accent House, Triangle Business Park, Wendover Road, Stoke Mandeville, Bucks HP22 5BL, United Kingdom Tel:+44-1296-739-500
● FRANCE	Sumitomo (SHI) Demag Plastics Machinery (France) S.A.S. 6, avenue Irene Joliot Curie, 77700 Bailly-Romainvilliers, France Tel:+33-1-60-33-20-10
● SPAIN / PORTUGAL	Sumitomo (SHI) Demag Plastics Machinery España S.L. Plaza de América 4, 2º - 3º, ES 46004 Valencia, Spain Tel:+34-96-111-63-11
● POLAND	Sumitomo (SHI) Demag Plastics Machinery Polska Sp. z o.o. Ul. Jagiellonska 81 - 83, 42 200 Czesochowa, Poland Tel:+48-34-370-95-40
● AUSTRIA	Sumitomo (SHI) Demag Plastics Machinery GmbH (Branch Austria) Rudolf-Buchinger-Str. 22a, 3430 Tulln an der Donau, Austria Tel:+43-664-2311357
● HUNGARY	Sumitomo (SHI) Demag Plastics Machinery Hungária Kft H 2045 Torókbálint, FSD Park 2, Fsz. 2, Hungary Tel:+36-70-332-7869
● ITALY	Sumitomo (SHI) Demag Plastics Machinery (Italia) Strada del Portone, 61, 10137 Torino, Italy Tel:+39-011-95-95-057 Fax:+39-011-95-95-185
● RUSSIA	JSC Sumitomo (SHI) Demag Plastics Machinery Kantemirovskaya Str. 65, room number 1, 115477 Moscow, Russia Tel:+7-495-937-97-64
● CZECH / SLOVAKIA	Sumitomo (SHI) Demag Plastics Machinery Česko spol. s.r.o. K Bílému Vrchu 2912/3 193 00 Praha 9, Czech Tel:+420-296-226-210
● IRELAND	Sumitomo (SHI) Demag Plastics Machinery Ltd. Unit C7, Grange Upper, Annacotty Business Park, Co. Limerick, V94 T328, Ireland Tel:+353-86-8254731
● SHANGHAI	SHI Plastics Machinery (Shanghai) Ltd. 11F SMEG Plaza, No.1286 Hong Qiao Road, Chang Ning District, Shanghai, 200336, China Tel:+86-21-3462-7556 Fax:+86-21-3462-7655
● DALIAN	SHI Plastics Machinery (Shanghai) Ltd. Dalian Office 1109 Fuyou Building, No.9 Huanghaixiliu Road, Economic and Technological Development Zone, Dalian 116600, China Tel:+86-411-8764-8052 Fax:+86-411-8764-8053
● TIANJIN	SHI Plastics Machinery (Shanghai) Ltd. Tianjin Office Building3-2-402/Building3-1-401, U Gu Industrial Park, Shuanggang Town Industrial Park, Jinnan District, Tianjin 300350, China Tel:+86-22-5871-5537 Fax:+86-22-5871-5531
● SUZHOU	SHI Plastics Machinery (Shanghai) Ltd. Suzhou Office / Technical Center Room 2101, Building 2, Jinfeng Urban Design Park, No 211, Zhujiang South Road, Mudu Town, Suzhou City, Jiangsu Prov. 215101, China Tel:+86-512-6632-760 Fax:+86-512-6632-1770
● NINGBO	Ningbo Sumiju Machinery, Ltd. No.775 Hengshan West Road, Beilun District, Ningbo City, Zhejiang 315800, China Tel:+86-574-2689-0162 Demag Plastics Machinery (Ningbo) Co., Ltd. No.28, Baiyunshan Road, Beilun District, Ningbo City, Zhejiang 315800, China Tel:+86-574-2690-6600 Fax:+86-574-2690-6618
● DONGGUAN	Dongguan SHI Plastics Machinery Ltd. / Technical Center 6102 Block 8 Zhongda 365 No.9, Xincheng Road, Songshan Lake, Dongguan City, Guangdong Province 523808, China Tel:+86-769-8533-6071 Fax:+86-769-8534-9091
● HONG KONG	SHI Plastics Machinery (Hong Kong) Ltd. Room 601, Telford House, 12-16 Wang Hoi Road, Kowloon Bay, Hong Kong Tel:+852-2750-6630 Fax:+852-2759-0008
● TAIWAN	SHI Plastics Machinery (Taiwan) Inc. 6F., No.35, Dexing W. Rd., Shilin Dist., Taipei 111, Taiwan Tel:+886-2-2831-4500 Fax:+886-2-2831-4483 SHI Plastics Machinery (Taiwan) Inc. Taichung Office Rm D, 6F, No.190, Chung Kong 2nd Rd., Shi Tun Dist., Taichung 407, Taiwan Tel:+886-4-2358-7334 Fax:+886-4-2358-9335
● KOREA	SHI Plastics Machinery (Korea) Co., Ltd. #203, JEIPLATZ, 186, Gasan digital 1-ro, Geumcheon-gu, Seoul 08502, Korea Tel:+82-2-757-8656 Fax:+82-2-757-8659 SHI Plastics Machinery (Korea) Co., Ltd. Southern Office #209, 48, Dongbu-ro 22-gil, Dong-gu, Daegu 41242, Korea Tel:+82-53-2511-1111 Fax:+82-53-2511-1111
● SINGAPORE	SHI Plastics Machinery (S) Pte. Ltd. / Technology Center 3791 Jalan Bukit Merah #03 07/08/09, E Centre @ Redhill, Singapore 159471 Tel:+65-6779-7544 Fax:+65-6777-9211
● THAILAND	SHI Plastics Machinery (Thailand) Ltd. / Technology Center 317 Debaratna Road, Kwaeng Bangna Nuea, Khet Bangna, Bangkok 10260, Thailand Tel:+66-2-747-4053, -4054, -4055, -4056 Fax:+66-2-747-4081
● MALAYSIA	SHI Plastics Machinery (Thailand) Ltd. South Office Pinthong 2 Industrial Estate, Room BC-08, 150/55 Moo 9, Nongkham Subdistrict, Sriracha District, Chonburi 20230, Thailand SHI Plastics Machinery (Malaysia) SDN BHD Unit G-01, Tingkat Bawah Menara Axis, No.2 Jalan 51A/223, 46100 Petaling Jaya, Selangor D.E. Malaysia Tel:+60-3-7958-2079, -2081 Fax:+60-3-7958-2084
● VIETNAM	SHI Plastics Machinery (Malaysia) SDN BHD Penang Office No.7, Ground Floor, Jalan Kelisa Emas, Taman Kelisa Emas, 13700 Seberang Jaya, Penang, Malaysia Tel:+60-4-604-397-5725 Fax:+60-4-604-397-5726 SHI Plastics Machinery (Vietnam) LLC Floor 1A, Hong Kong Tower, No.243A La Thanh Street, Lang Thuong Ward, Dong Da District, Hanoi, Vietnam Tel:+84-24-3728-0105 Fax:+84-24-3728-0106 SHI Plastics Machinery (Vietnam) LLC Ho Chi Minh Branch 1st floor, Block C, Dat Phuong Nam Building, 241A Chu Van An Street, Ward 12, Binh Thanh District, Ho Chi Minh City, Vietnam Tel:+84-8-3514-6645 Fax:+84-8-3514-6653
● INDONESIA	PT. SHI Plastics Machinery (Indonesia) Jl. Tebet Raya No. 58, Tebet, Jakarta 12810, Indonesia Tel:+62-21-829-3872, -3873 Fax:+62-21-828-1645
● PHILIPPINES	SHI Plastics Machinery (Phils) Inc. Ground Floor, Mirax Building 2270 Chino Roces Avenue, Makati City, Philippines Tel:+63-2-8845-0877, -8844-0632 Fax:+63-2-8886-4670
● INDIA	SHI Plastics Machinery (India) Private Ltd. Unit No.22-25, 1st Floor, JMD Galleria, Sohna Road, Gurgaon, Haryana-122001, India Tel:+91-124-2217056, -64 Fax:+91-124-2218076 SHI Plastics Machinery (India) Private Ltd. Chennai Office Second Floor, 308-309, Block No.64, Ten Square Building, Jawaharlal Nehru Road, Koyambedu, Chennai, Tamil Nadu 600107, India Tel:+91-124-2217056, -64

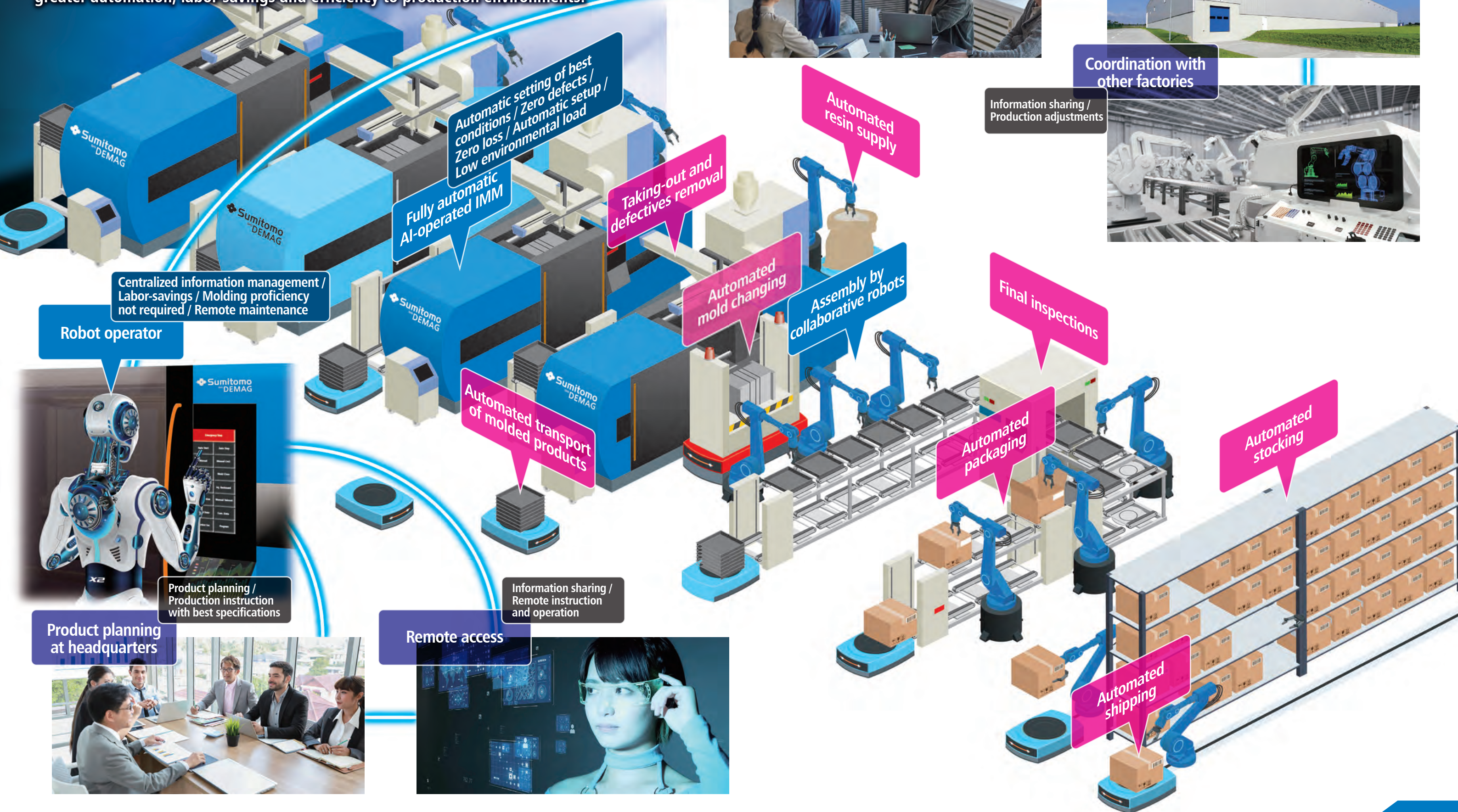


www.shi.co.jp/plastics/



ICT-driven molding factory of the near future

Advances in information and communication technologies are bringing greater automation, labor-savings and efficiency to production environments.

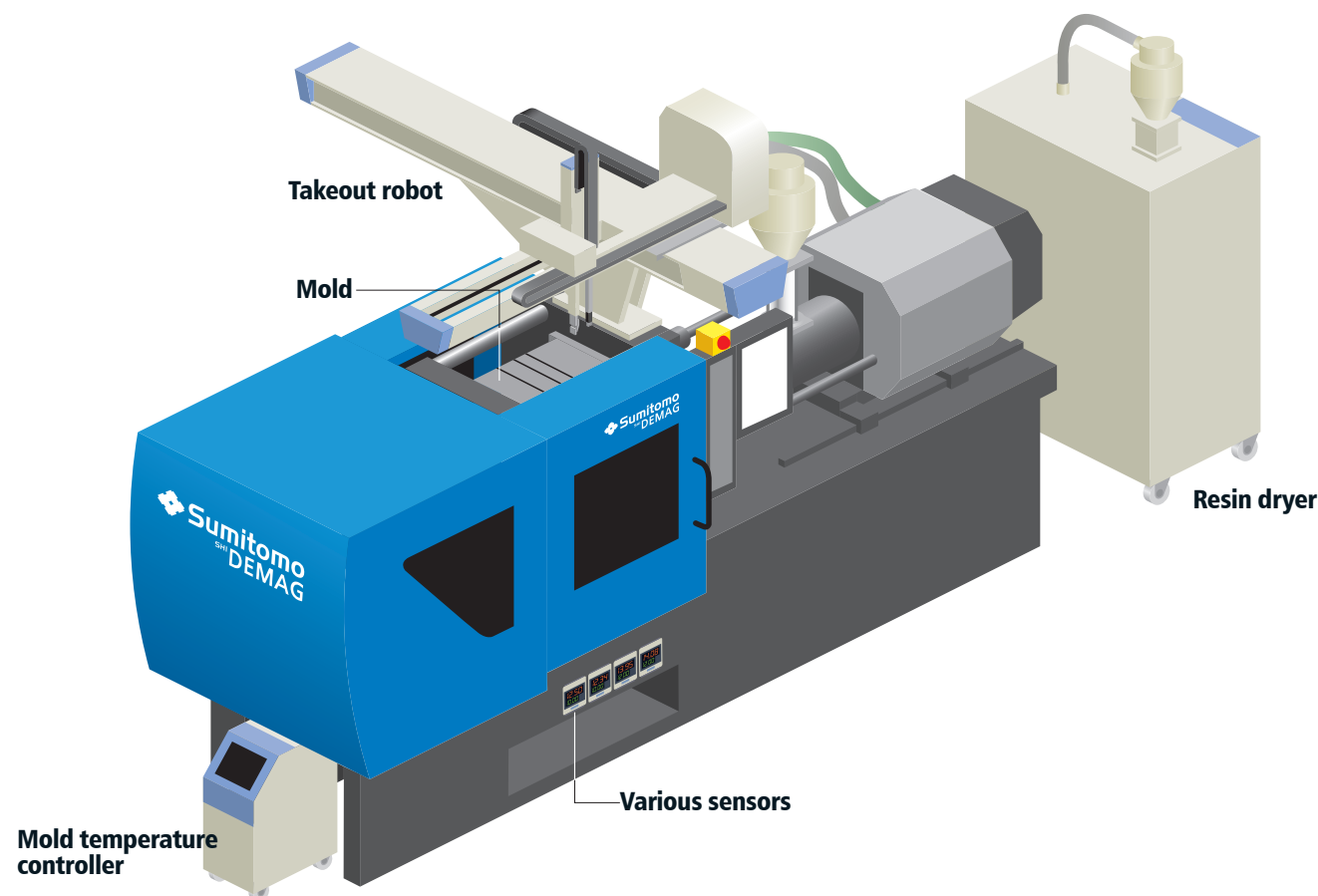


Broader, deeper and easier grasp of production information

All kinds of data vital to product quality are collected, integrated, then analyzed and logged with simple operations.

i-Connect Production Quality Control System

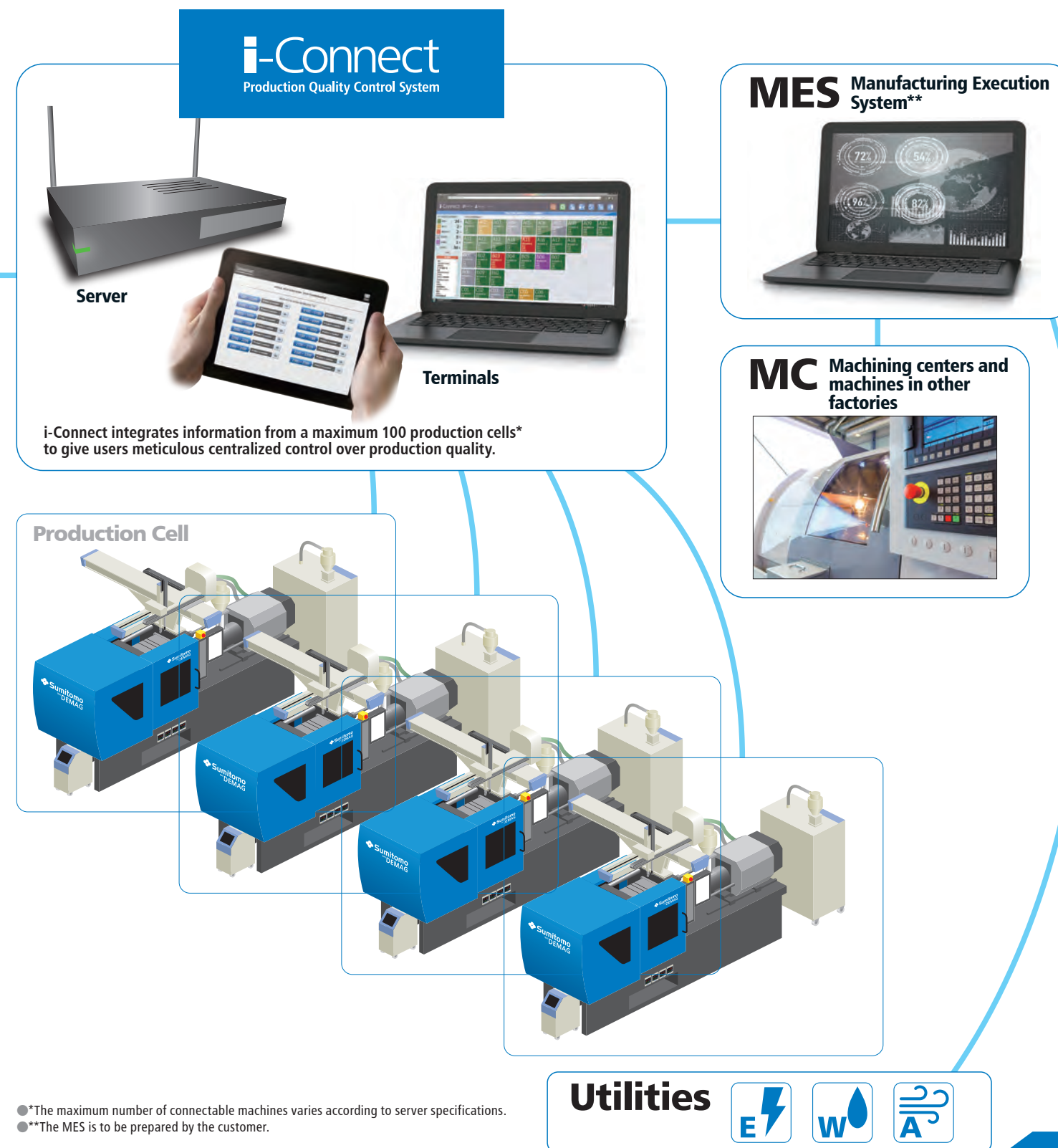
Production Cell A production unit with a molding machine as the core



The information from peripheral equipment and sensors is sent to the molding machine by M2M communications.

●Options are required to connect some ancillary equipment to the molding machine.

i-Connect is a core application of ICT for production environment which integrates information from each production cell consisting of a molding machine, peripheral equipment and sensors. It improves monitoring and control of all production cells in leaps and bounds to enable sophisticated, borderless and effective quality control over both processes and products. Moreover, by connecting to upper control systems such as MES (Manufacturing Execution System), it can bring greater automation, labor-savings and efficiency to production environments. i-Connect is a core system to accomplish an automated and labor-saving near-future factory.



Utilities



Build a smart information network

Networks with i-Connect as a core dramatically improve the efficiency of quality control operations.

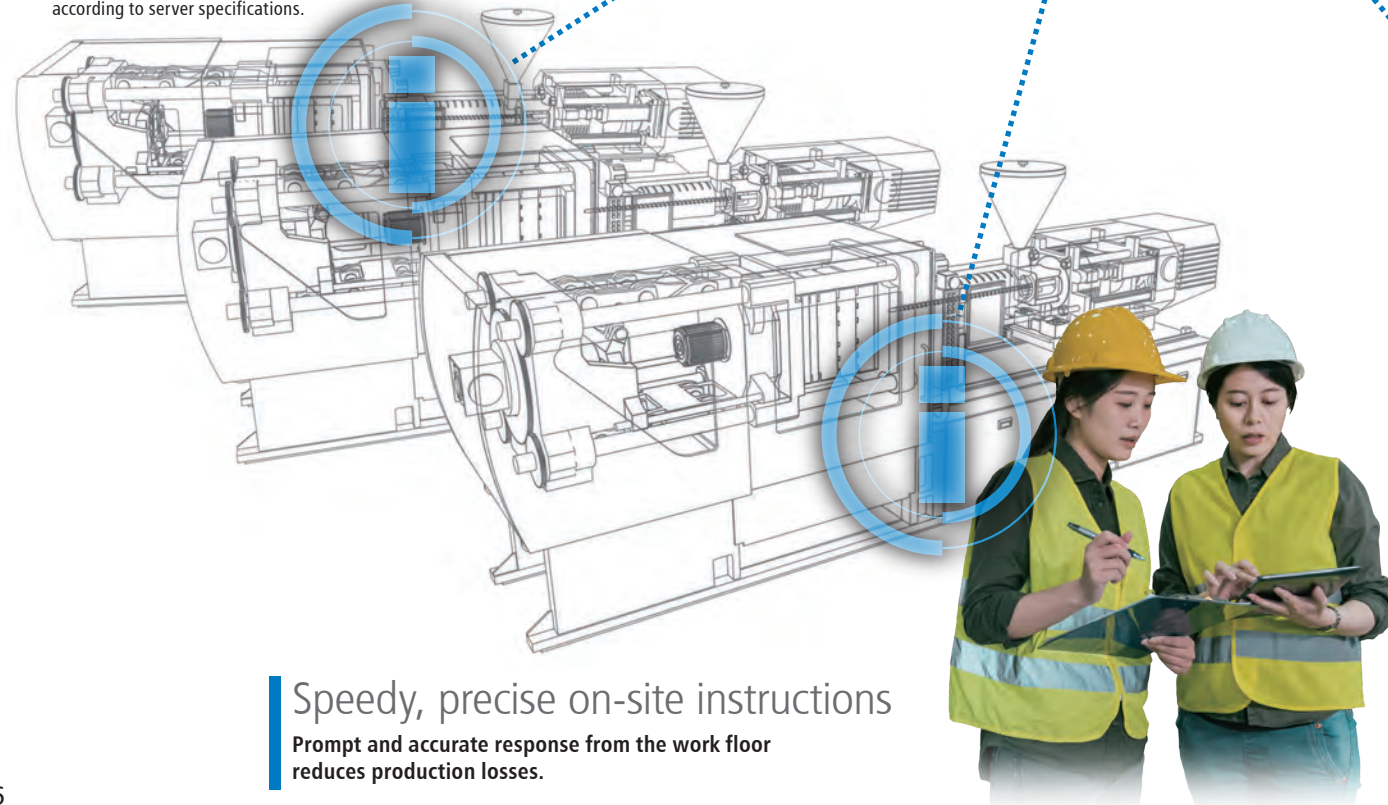
i-Connect
Production Quality Control System

- ! For server recommendations, see pg. 17.
- ! The customer is responsible for preparing the environment for external connections.

Molding "visualized"

Various information on molding is processed centrally.
Up to 100 molding machines can be managed on a single network.

- ! The maximum number of connectable machines varies according to server specifications.



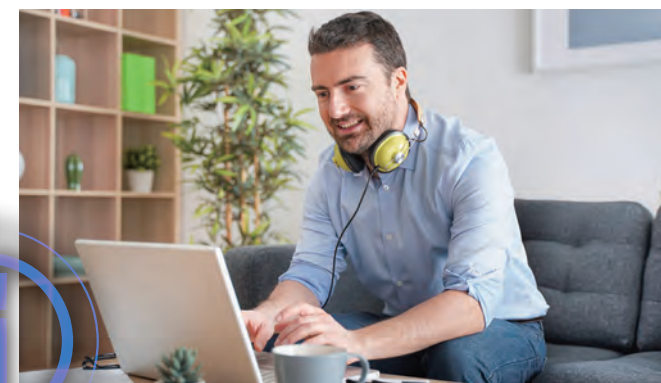
Speedy, precise on-site instructions

Prompt and accurate response from the work floor reduces production losses.



Information sharing with business partners

By sharing molding information in real-time, users can eliminate lost time and enhance reliability.



Telework options

i-Connect allows for new work styles in quality control.



Remote verification

Production quality can be understood in every detail without being physically present at the plant.



Direct access to information anywhere

Real-time information can be incorporated into meeting agendas.



Production control from remote location

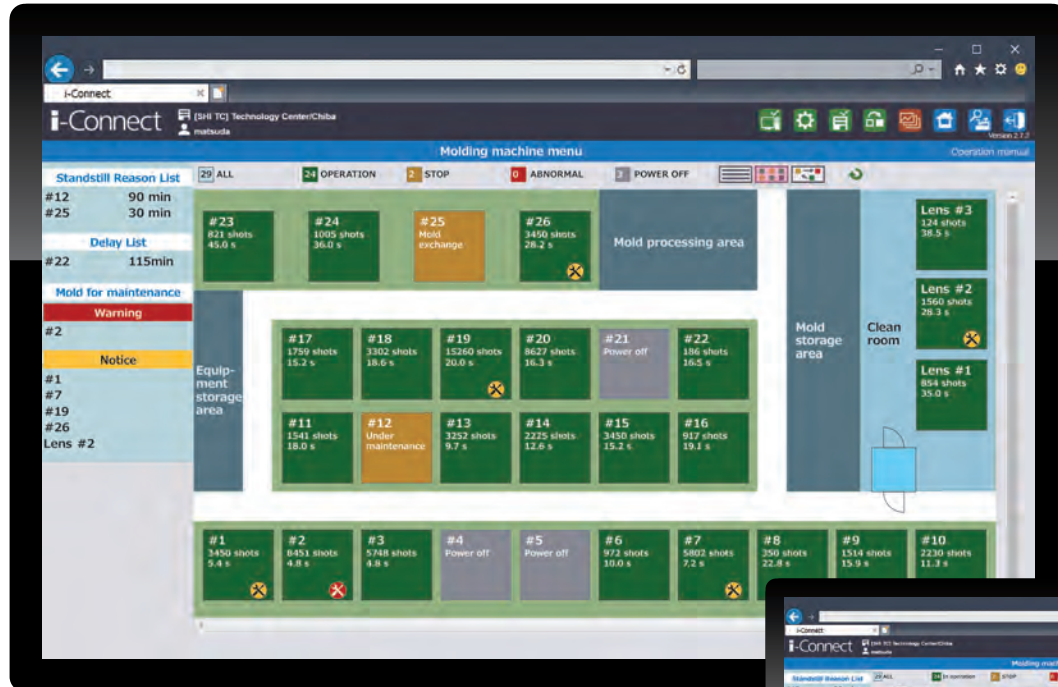
The necessary information can be promptly communicated to operators from offices.

Broader grasp of information

i-Connect centralizes quality control information from your factories around the world and displays it through the intuitive visual that make production planning swift, efficient and effective.

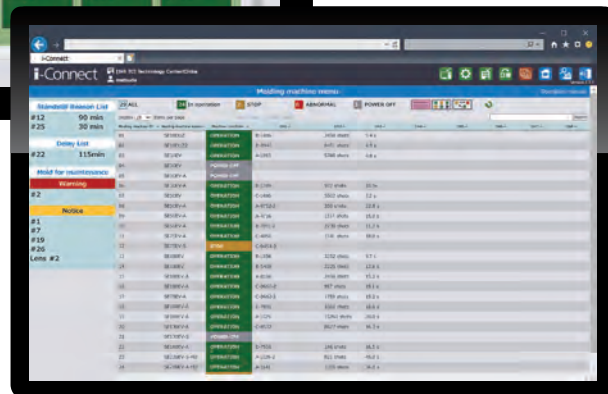
Intuitive control on the entire factory with an overview list

Icon placement that matches the factory layout allows understanding of the operational status of each machine in an instant. It is also possible to display a list of operation transition or production progress graph for each machine.



Molding Machine Menu

Displays all registered molding machines in each factory. The layout can be changed at any time, and the background image can also be set (floor layout etc.).



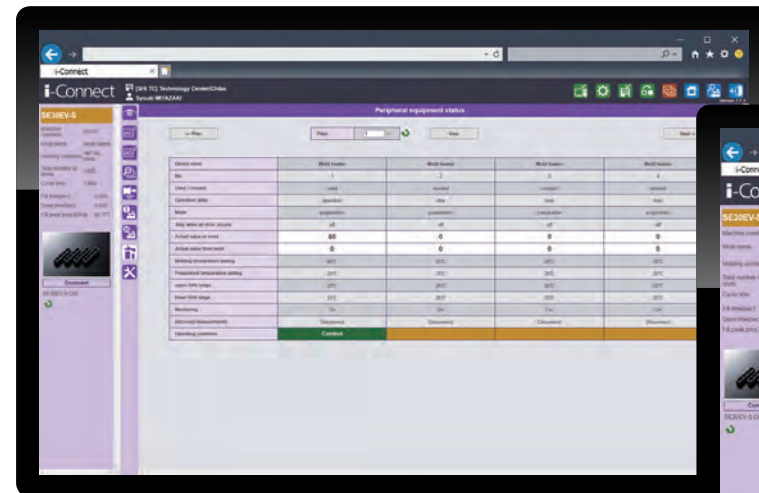
Molding Machine Menu (Listing mode)

It can also be displayed in list format.

Real-time understanding of the entire production cell

Acquires data such as temperature, operating status, etc. of peripheral devices, and displays them in a list.

● Separate molding machine option(s) might be required for connection with peripheral devices and sensors.



Peripheral Equipment Status

Displays the operating status and numerical data for peripheral devices connected to the selected molding machine. This allows upper and lower limits to be set, and issues warning when the monitored value is out-of-range.



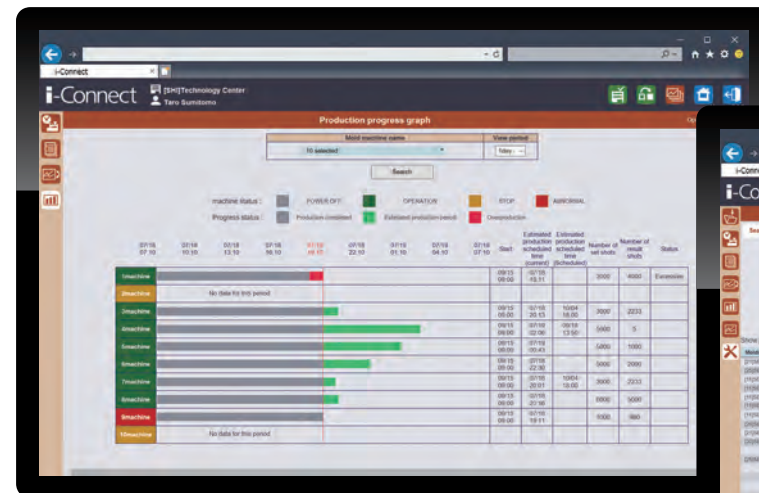
Quality Control Chart

Understanding of the relationship between the actual temperature of the mold temperature controller and the filling peak pressure of the molding machine is also possible by comparing graphs.

Examples of Utilization

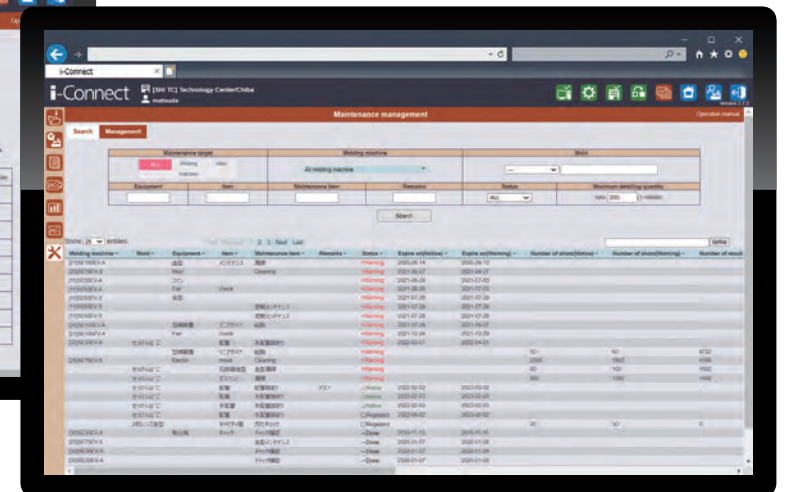
Production planning

Production can be appropriately planned because users get a quick look at the production progress and maintenance information.



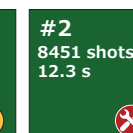
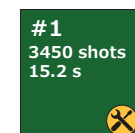
Production Progress Graph

Status and progress of each molding machine is centrally managed. Users can spot under- or over-production at a glance.



Maintenance Management

By setting maintenance intervals for molds and equipment parts, trouble can be predicted, and maintenance performed properly.



Maintenance Alerts

Alert icons are displayed over machine icons on the Molding Machine Menu screen (left page) when the maintenance period is approaching.

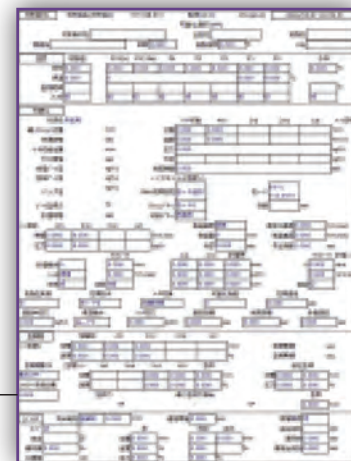
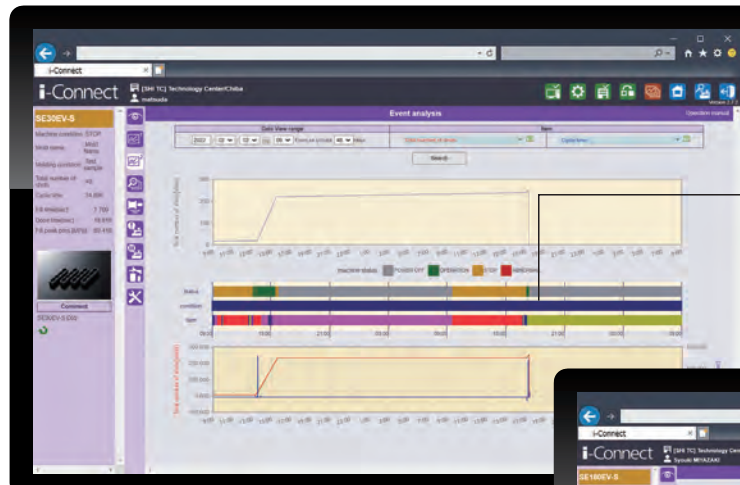
Deeper grasp of information

The ability to track production down to the behavior of a single shot on a single machine enables reliable traceability.

Examples of Utilization

Time-based data management

History information of each lot can be collectively managed. Machine running status or conditions that were logged during a certain period of time can be easily verified, which facilitates product tracing.

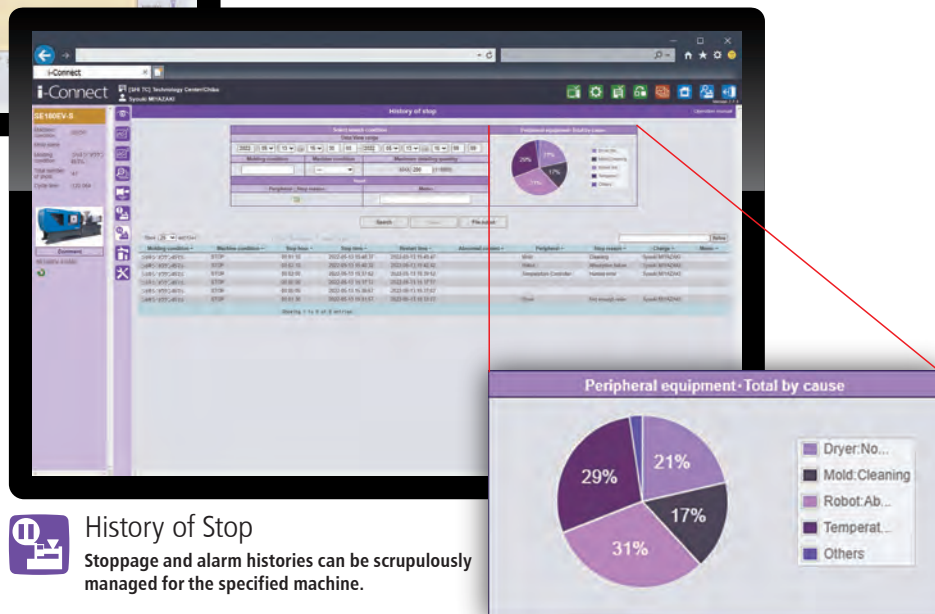


Calling and verification of molding conditions are possible.

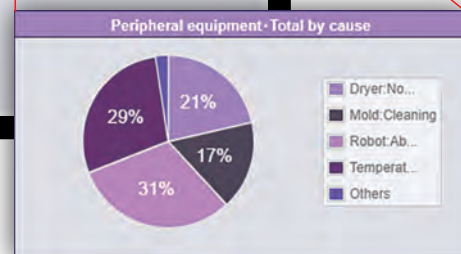
● Image is blurred on purpose.

Event Analysis

Molding machine status, items, and condition alterations are displayed on a graph, and events searching is possible.



History of Stop
Stoppage and alarm histories can be scrupulously managed for the specified machine.

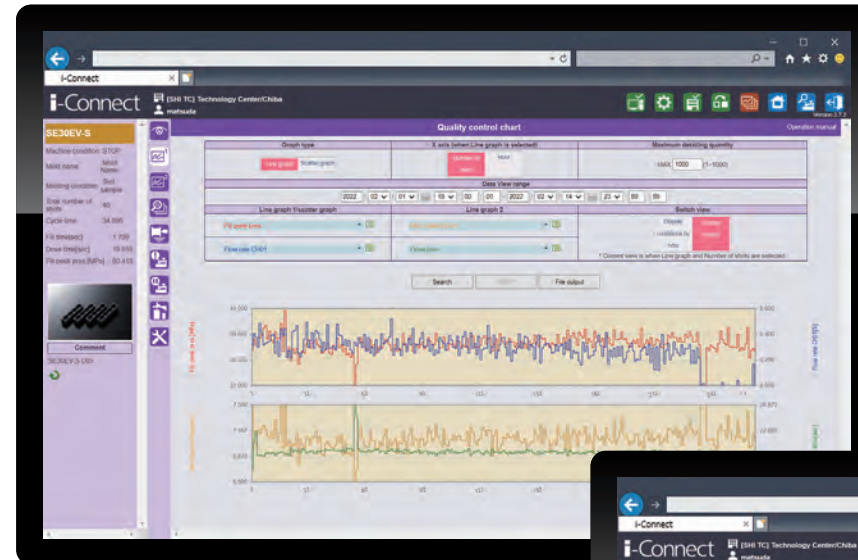


Allows input and analysis of the causes of stoppage.

Examples of Utilization

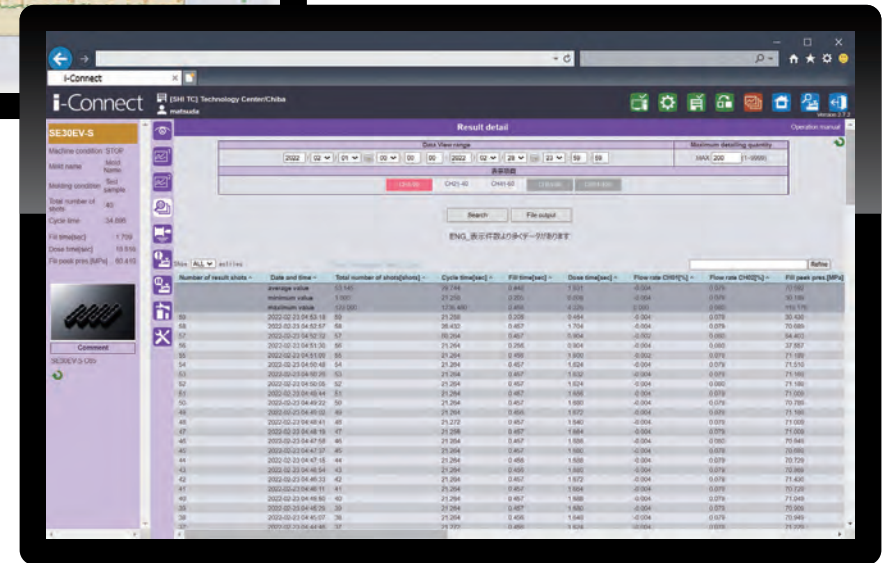
Thorough data management down to each shot

Managing data by individual shots allows users to check back and verify whether products were being stably molded at any point in time, giving them a useful tool for building traceability systems and practices.



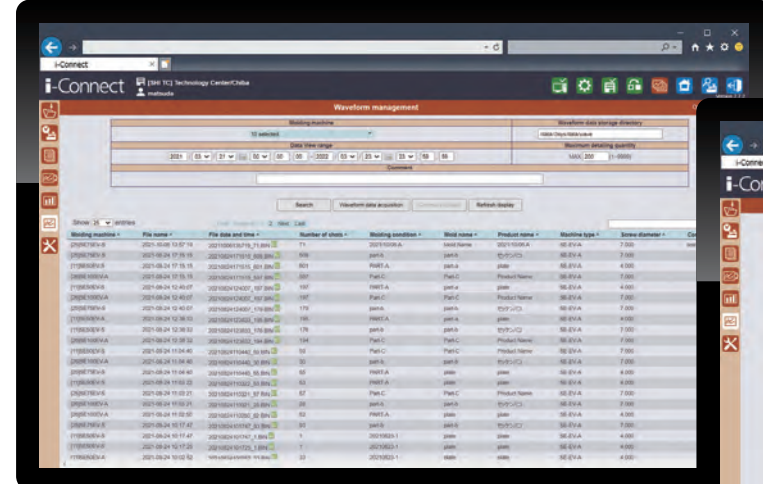
Quality Control Chart

Various data of the specified machine can be displayed as graphs.



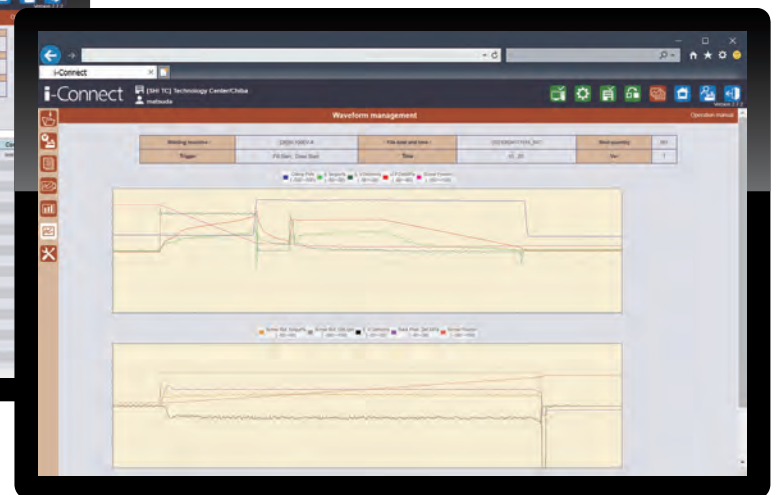
Result Detail

Data logged with every shot is aggregated to manage in bulk.



Waveform Management

Wave patterns are obtained for every shot on every machine. Understanding the correlations between these patterns and products increases the precision of quality control.



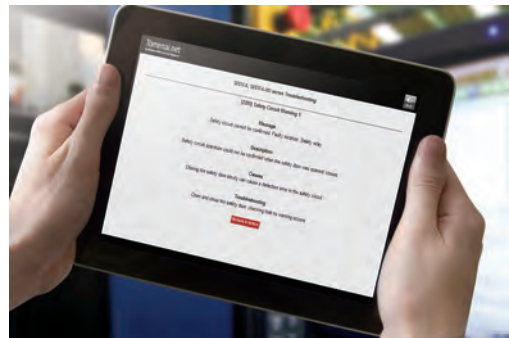
Easier grasp of information

i-Connect makes information sharing and internal/external collaboration smooth and speedy.

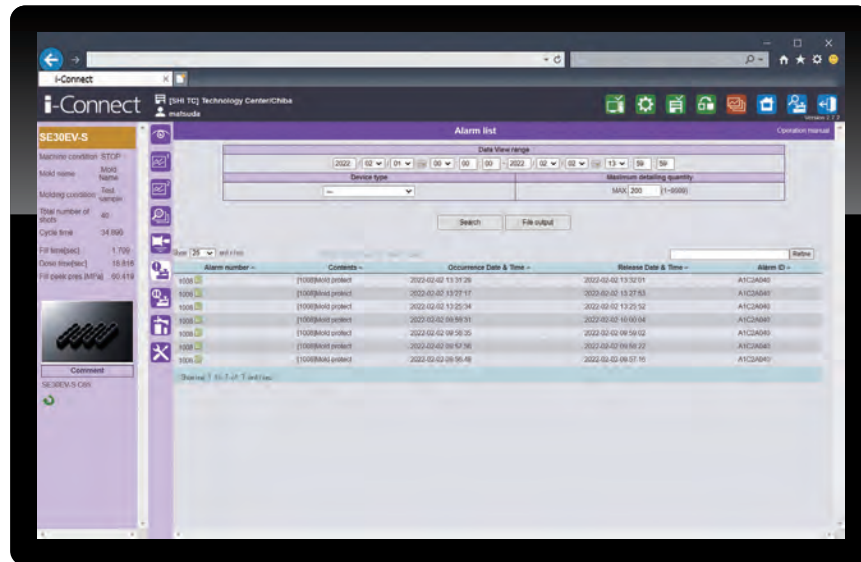
Human error can be eliminated by automating and going paperless.

Speedy error handling

Troubleshooting guide is available corresponding to the alarm number, leading to rapid error handling and reduction of downtime.

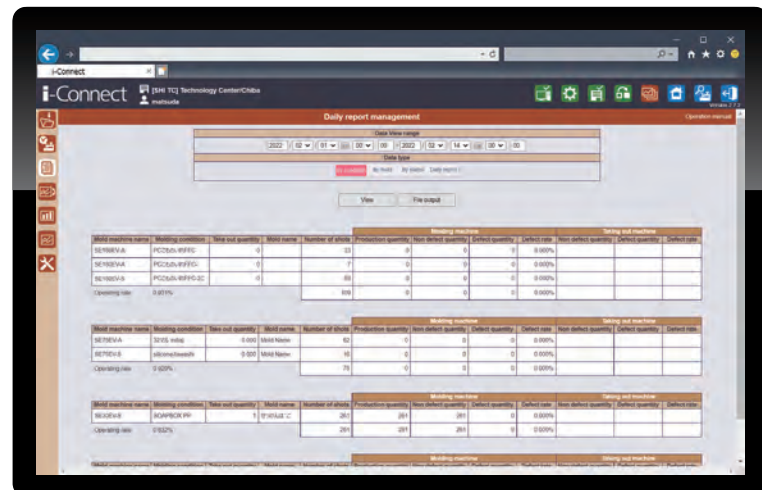


● This feature applies only to SE-EV, SE-EV-A, SE-EV-S, SE-EV-A-HD and SE-EV-S-HD series.



Alarm List

Displays the alarm history of the specified machine.



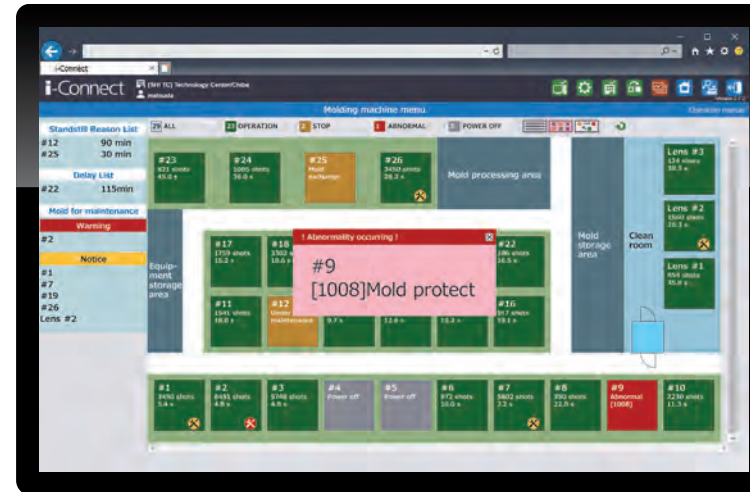
Daily Report Management

Displays daily reports based upon operating data of molding machines.

Examples of Utilization

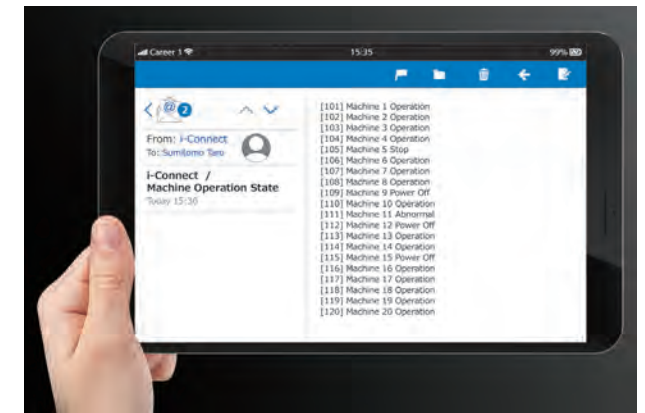
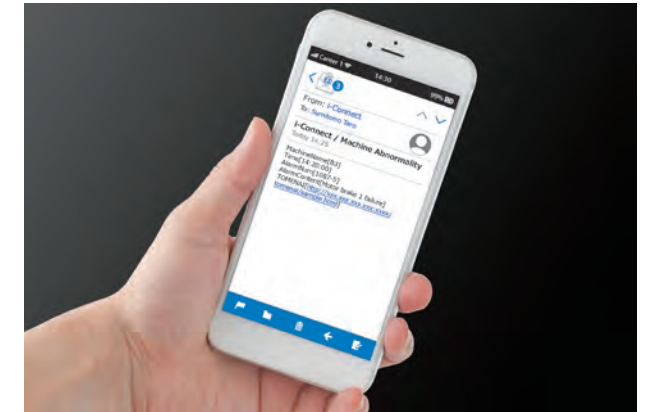
Trouble alerts in real-time

Users can stay abreast of operating status, trouble and other events via real-time alerts sent to smartphones, tablets or other devices even if being away from the line or factory.



Molding Machine Menu

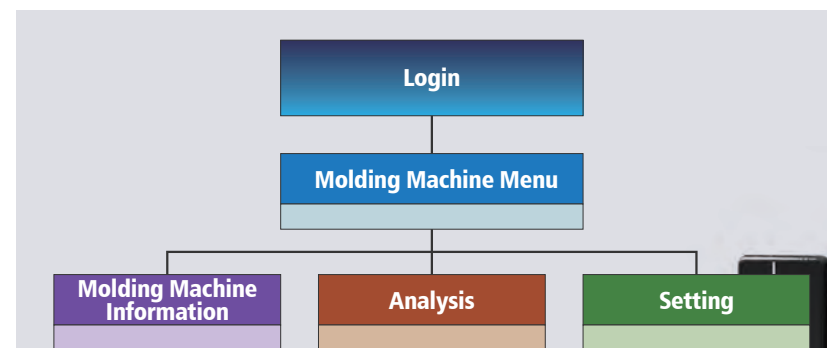
If trouble occurs, an alarm is sounded and a pop-up message noting the effected machine and error code appears.



Running status and trouble alerts are sent to user-set email addresses.

Simple operation

Browser-based application means that there is no installation required. The graphical screen design supports intuitive, speedy operation.



Coloring by category

Theme color is configured for each main item, providing an easy-to-understand screen configuration.



Dashboard

Summarized information for the selected machine is displayed as a list on screen.

On-site situation can be monitored by webcams.

● Webcams are to be prepared by the customer.



Examples of benefits

Quantified the benefits of using i-Connect

act! SUSTAINABLY
Creating a Future

Examples of Benefits

●The function suggested by the photo is not a feature of i-Connect.

1 Identify causes of defects

Users can save a great deal of time when defects occur by eliminating the need to report to a supervisor, visit the site and make verifications in person. This not only improves yield and decreases defects but also reduces wasted resin, which contributes to SDGs.



Operator reports defect to manager.

Manager visits site.

Trouble log is checked.

Molding conditions are checked.

Actual data is checked.

Problem is identified and operator fixes it.

Usual process

Operator reports defect to manager.

Manager utilizes Event Analysis.

Problem is identified and operator fixes it.

Process when using i-Connect -1

Operator utilizes Event Analysis.

Operator identifies and fixes the problem.

Process when using i-Connect -2



- Improve production yield
- Reduce resin waste
- Lower environmental load

Reduced man-hours

When operators use i-Connect, there is an additional reduction in man-hours.

≥ -50%

i-Connect
Production Quality Control System

2 Early discovery and recovery from short time breakdown

Trouble is immediately reported to the manager. Rapid recovery is possible by accessing Tomenai.net (our production technology information website) to verify and respond to measures, resulting in improved operating rate and productivity.



Reduced down time

The time spent waiting for our service staff to arrive can be saved.

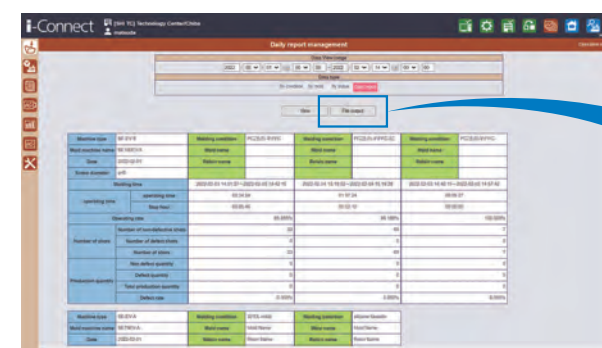
≥ -50%

i-Connect
Production Quality Control System

●Some situations may unavoidably require intervention by our service staff.

3 Daily report generation and CSV export

i-Connect automatically generates daily reports. Reports can be exported to PC as CSV files. This greatly reduces desk work and time, and helps office workflows go paperless.



Reduced work time

The time required to manually prepare daily reports is reduced to zero.

-3,520
hrs per year

i-Connect
Production Quality Control System

●Basis for calculation:
Time required to record data: 10 min / Data recording frequency: Once every hour /
Number of managed machines: 10 / Operators: 4 (1 per 2.5 machines) /
Work period: 20 days/month, 11 months/year



Reduced management costs

Users are spared the time of data input as well as the cost of paper for printing reports.

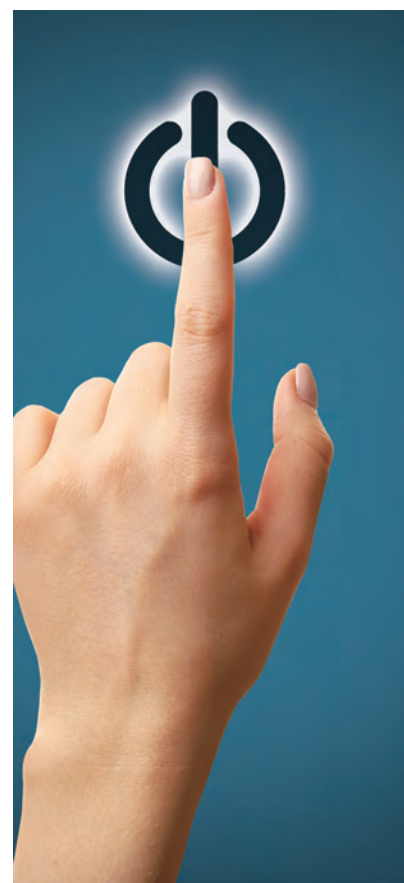
-5,760
USD per year

i-Connect
Production Quality Control System

●Basis for calculation:
Cost incurred to prepare and collect reports, enter data in PC, purchase paper and archive reports: 60 JPY / Number of managed machines: 12 /
Number of days running per year: 320 / 1 USD = 120 JPY
Formula: 0.5 USD x 35 x 12 x 320 = 5,760 USD

Higher reliability

We provide the most appropriate system with the recommended server.



High-performance edge server

Our recommended server offers large storage capacity needed to handle the high-load data analysis at the edge of the user's network. It can retain as much data as a data center, which can be used as big data.

Easy setup and complete security

Setup is quicker than usual because there are no applications to install. Moreover, the server comes loaded with preinstalled security software to protect against data leaks and unauthorized access.

Robust design for factory environment

Durability-enhanced design supports a wide temperature range and guarantees stable operation even under harsh environmental conditions.

Support fast cycle molding and connection of multiple machines

A single server can manage a maximum of 100 machines and offers more than enough capacity to process the high-density data streams from fast cycle molding at 3-second turnout rates.

● The maximum number of connectable machines varies according to server specifications.

Global maintenance

These servers come with 5 years of free maintenance and a replacement of all parts except consumables is free of charge.

- Not applicable in some countries and regions.
- Maintenance requests are handled through our sales offices. Maintenance services are provided by technical staff from HPE (Hewlett Packard Enterprise).

Build the best operating environment

To use i-Connect in the best operating environment, we recommend introducing a high-performance edge server from HPE (Hewlett Packard Enterprise).



Server specification

Item	Standard	High-performance spec
Processor	2.6 GHz x 2 cores	2.0 GHz x 8 cores
Memory	8 GB	32 GB
Storage	SSD 960 GB	SSD 1920 GB, HDD 1 TB
Operating system	CentOS	CentOS
Data retention period	2 months	3 months
Backup capacity	Approx. 10 years' worth	Approx. 10 years' worth
Guaranteed performance	Max. 50 machines connectable	Max. 100 machines connectable

● The above server specifications are subject to change without notice.




















Verify performance yourself



















We have posted a detailed movie about the i-Connect on YouTube. You can access it from the QR Code and verify performance yourself.

● QR Code is a registered trademark of DENSO WAVE INCORPORATED.



Main specifications

Molding machine menu		
Icon	Name	Functions
	Molding Machine Menu	Showing all molding machines by factory / Trouble pop-up messages and alarms\
	Factory List	Displaying the number of active molding machines by factory / Displaying the corresponding molding machine menu of the selected factory
	Logout	Logging out of i-Connect and quitting the application
Molding machine information		
Icon	Name	Functions
	Dashboard	Displaying molding machine status and operating ratio
	Quality Control Chart	Projecting and displaying molding machine data as graphs
	Event Analysis	Projecting and displaying molding machine status, control items or conditions as graphs / Searching for events
	Result Detail	Displaying actual values of user-selected control items (selectable up to 10 items)
	Molding Condition History	Displaying a history of changes to molding conditions
	Alarm List	Displaying a history of alarms
	History of Stop	Displaying a history of molding machine stoppages
	Peripheral Equipment Status	Displaying the status, set actual values of peripheral equipment
	Maintenance Management	Displaying a history of periodic maintenance performed on molding machines, molds and peripheral equipment
Analysis		
Icon	Name	Functions
	Restore Backup Data	Reading automatic backup data
	Operation Trend	Displaying the operating status of the selected molding machine as a bar graph
	Daily Report Management	Viewing daily reports based on performance data from molding machines
	Overall Comparison	Displaying the status and progress of the selected machine as a graph
	Production Progress Graph	Displaying the yield for the set number of shots of each machine
	Waveform Management	Acquiring real-time wave patterns shown on molding machines
	Maintenance Management	Setting and displaying collective maintenance schedule for molding machines (max. 10), molds and peripheral equipment

Setting		
Icon	Name	Functions
	User Management	Adding/Removing users, setting passwords and selecting languages
	Molding Machine Settings	Displaying a list of registered machines / Adding/Updating/Removing machines
	IP Address Diagnosis	Checking the network connection and IP address of machines included in connection settings
	Email Settings	Setting email function for status reports, trouble notices, etc.
	Molding Conditions	Displaying a list of current molding conditions (names) by machine
	Upload by Factory	Registering/Updating background image files by factory
	Server Machine Status	Displaying the time, available storage space, usage rate, memory usage and CPU usage of the server
	Client Status	Viewing client information of molding machines (Machine name, IP address, remaining drive capacity, communication status, etc.)
	Data Management	Backing up and restoring databases
	Privilege Management	Adding/Removing accessible functions, information displayed on molding machine menus and operating authorizations
	Factory List	Viewing/Adding/Updating/Removing factory information
	Token Settings	Converting/Adding/Updating/Removing tokens
	Access Log Confirm	Viewing screen operating logs by user
	Status Settings	Setting/Editing names and background colors of machine status indications
	Master Registration	Registering conversion tables (masters) / Converting machine alarms and system ID codes
	Channel Settings	Setting displayed information items for each machine
	Task Reservation	Resetting the displayed total downtime / Exporting the collected data to CSV files / Setting the time interval for automatic data backup
	Task List	Viewing/Searching/Deleting tasks / Canceling scheduled tasks / Viewing logs

Compatible molding machines

Molding machine model	Basic connection (30 logging channels, molding conditions, etc.)	Advanced connection (100 logging channels, peripheral equipment and sensor communications)
SE-D, SE-DU (Not connected to iii-System)	Communication software to be added	Communication software to be added
SE-D, SE-DU (Connected to iii-System)	Installed	
SE-DUZ	Installed	
SE-EV (Not connected to iii-System)	Communication software to be added	
SE-EV (Connected to iii-System)	Installed	
SE-EV-A, SE-EV-S, SE-EV-A-HD, SE-EV-S-HD	Installed	

- Molding machines require a LAN interface in all cases.
- The Advanced connection offers a higher level of sophistication. Molding machines require additional communication software to enable all connections.



System configuration and requirements

- Tested browsers and versions: Internet Explorer 11.0/Firefox 61.0.1/Chrome 68.0
- Communications environment: A wired connection is required between the main hardware (computer) and molding machines, to ensure stable connection. Reference devices such as laptop computers and tablets may use wireless connections.
- Internet Explorer is a registered trademark of Microsoft. Firefox is a registered trademark of Mozilla. Chrome is a registered trademark of Google.

Supported languages

- i-Connect supports the languages below.
- English • Japanese • Simplified Chinese • Traditional Chinese • Korean
- To change the display language, users need to set language on the User Management screen, then logout and log back into the application.

IMPORTANT!

Users must build and prepare the network environment for using this application. Sumitomo Heavy Industries, Ltd. bears no responsibility whatsoever for compensation and the like for damages caused to users or third parties, if the aforementioned system requirements recommended for this application are not built, the application is used improperly, or any part of this application has been modified, added to, deleted or duplicated upon using.