



Sumitomo Heavy Industries, Ltd.
Plastics Machinery Div.

● TOKYO	Sumitomo Heavy Industries, Ltd. Plastics Machinery Div. Global Sales Dept. 1-1, Osaki 2-chome, Shinagawa-ku, Tokyo, 141-6025, Japan Tel:+81-3-6737-2576 Fax:+81-3-6866-5176
● CHIBA	Sumitomo Heavy Industries, Ltd. Chiba Works/Technology Center 731-1, Naganumahara, Inage-ku, Chiba-City, 263-0001, Japan Tel:+81-43-420-1471 Fax:+81-43-420-1591
● U.S.A.	Sumitomo (SHI) Demag Plastics Machinery North America, Inc. /Technology Center 410 Horizon Dr., Suite 200, Suwanee, GA 30024, United States Tel:+1-770-447-5430 Fax:+1-678-990-1716 Sumitomo (SHI) Demag Plastics Machinery North America, Inc. Cleveland Office/Technology Center 11792 Alameda Drive, Strongsville, OH 44149, United States Tel:+1-440-876-8960 Fax:+1-440-876-4383 Sumitomo (SHI) Demag Plastics Machinery North America, Inc. Chicago Office/Facility and Tech Center 1177 Corporate Grove Dr. Buffalo Grove, IL 60089, United States Tel:+1-847-947-9569 Sumitomo (SHI) Demag Plastics Machinery North America, Inc. Anaheim Office/Training and Demo Center 1130 N. Armando St. Anaheim, CA 92806, United States
● MEXICO	SHI Plastics Machinery de Mexico, S.A. DE. C.V. Monterrey Office Ignacio Sepulveda 124, Seccion 7, Edificio 1 Parque Industrial Kalos Encarnacion Colonia La Encarnacion, Apodaca, N.L. C.P. 66633, Mexico Tel:+52-81-8356-1714, -1720, -1726 Fax:+52-81-8356-1710 SHI Plastics Machinery de Mexico, S.A. DE. C.V. Leon Office Cluste Industria TBC Rio Conchos No. 101, Col. La Luz Leon, GTO C.P. 37458, Mexico Tel:+52-477-707-0504
● BRAZIL	Sumitomo (SHI) Demag do Brasil Comercio de Máquinas para Plásticos Ltda. Rodovia do Açúcar (SP-075), km 26-Jd. Oliveira-Itu/SP-Cep: 13312-500, Brazil Tel:+55-11-4403-9286
● GERMANY	Sumitomo (SHI) Demag Plastics Machinery GmbH (Schwaig) /Technology Center Altdorfer Str. 15 90571 Schwaig, Germany Tel:+49-911-5061-0 Fax:+49-911-5061-265 Sumitomo (SHI) Demag Plastics Machinery GmbH (Wiehe) /Technology Center Donndorfer Str. 3 06571 Wiehe, Germany Tel:+49-34672-97-0 Fax:+49-34672-97-333
● UNITED KINGDOM	Sumitomo (SHI) Demag Plastics Machinery (UK) Ltd. Accent House, Triangle Business Park, Wendover Road, Stoke Mandeville, Bucks, HP22 5BL, United Kingdom Tel:+44-1296-73-95-00 Fax:+44-1296-73-95-01
● FRANCE	Sumitomo (SHI) Demag Plastics Machinery (France) S.A.S. ZAC du Mandinet, 9, Rue des Campanules, 77437 Marne-La-Vallée Cedex 2, France Tel:+33-1-60-33-20-10 Fax:+33-1-60-33-20-03
● SPAIN	Sumitomo (SHI) Demag Plastics Machinery España S.L. Plaza de América 4, 2º - 3ª, ES 46004 Valencia, Spain Tel: +34-96-111-63-11
● POLAND	Demag Plastics Group SP. z o.o. Ul. Jagiellonska 81 - 83, 42 200 Czesochowa, Poland Tel:+48-34-370-95-40 Fax:+48-34-370-94-86
● AUSTRIA	Sumitomo (SHI) Demag Plastics Machinery GmbH -Office Austria- Wolfgang-Amadeus-Mozart-Str. 5/3, 3430 Tulln an der Donau, Austria Tel:+43-2272-61-868 Fax:+43-2272-61-868-89
● HUNGARY	Sumitomo (SHI) Demag Plastics Machinery Hungaria Kft H-2045 Törökbalint, FSD Park 2, Fsz. 2, Hungary Tel:+36-23-531-290 Fax:+36-23-531-291
● ITALY	Sumitomo (SHI) Demag Plastics Machinery (Italia) S.r.l. Via Asti 88/A 10098 Rivoli (TO) Italy Tel:+39-11-95-95-057 Fax:+39-11-95-95-185
● RUSSIA	CISC Sumitomo (SHI) Demag Plastics Machinery Prombaza OAO "Stroitransgaz", d. Ascherino Leninskiy raion, 142717 Moscow region, Russia Tel:+7-495-937-97-64 Fax:+7-495-933-00-78
● SHANGHAI	SHI Plastics Machinery (Shanghai) Ltd. 11F SMEG Plaza, No.1386 Hong Qiao Road, Chang Ning District, Shanghai, 200336, China Tel:+86-21-3462-7556 Fax:+86-21-3462-7655
● DALIAN	SHI Plastics Machinery (Shanghai) Ltd. Dalian Office Room 7, Floor 12B, Fuyou Building, No.9, Huanghai Xi No.6 Road, Dalian Development Zone, 116600, China Tel:+86-411-8764-8052 Fax:+86-411-8764-8053
● TIANJIN	SHI Plastics Machinery (Shanghai) Ltd. Tianjin Office Room 501, Part 2, Building Lian Dong U Gu, Chilong Street, Shuanggang Town Industrial Park, Jinnan District, Tianjin 300350, China Tel:+86-22-5871-5537 Fax:+86-22-5871-5531
● SUZHOU	SHI Plastics Machinery (Shanghai) Ltd. Suzhou Office/Technical Center Room 2101, Building 2, Jinfeng Urban Design Park, No 211, Zhujiang South Road, Mudu Town, Suzhou City, Jiangsu Prov. 215101, China Tel:+86-512-6632-1760 Fax:+86-512-6632-1770
● NINGBO	Ningbo Sunjiu Machinery, Ltd. No.28, Baiyunshan Road, Modern Logistics Park, Beilun District, Ningbo, 315800 Zhejiang, China
● DONGGUAN	Dongguan SHI Plastics Machinery Ltd. /Technical Center No.6, Yuan Shan Zai Road, Heng Gang Tou Village, Xin An District, Chang An Town, Dongguan City, Guangdong Province, China Tel:+86-769-8533-6071 Fax:+86-769-8554-9091
● HONG KONG	SHI Plastics Machinery (Hong Kong) Ltd. Room 601, Telford House, 12-16 Wang Hoi Road, Kowloon Bay, Hong Kong Tel:+852-2750-6630 Fax:+852-2759-0008
● TAIWAN	SHI Plastics Machinery (Taiwan) Inc. 6F., No.33, Dexing W. Rd., Shilin Dist., Taipei 11158, Taiwan Tel:+886-2-2831-4500 Fax:+886-2-2831-4483 SHI Plastics Machinery (Taiwan) Inc. Taichung Office Rm D, 6F, No.190, Chung Kong 2nd Rd., Shi Tun Dist., Taichung 40766, Taiwan Tel:+886-4-2358-7334 Fax:+886-4-2358-9335
● KOREA	SHI Plastics Machinery (Korea) Co., Ltd. 203, JEIPLATZ, 186, Gasan digital 1-ro, Geumcheon-gu, Seoul 08502, Korea Tel:+82-2-757-8656 Fax:+82-2-757-8659 SHI Plastics Machinery (Korea) Co., Ltd. Southern Office #207, 48, Dongbu-ro 22-gil, Dong-gu, Daegu 41242, Korea Tel:+82-53-247-8656 Fax:+82-53-247-8659
● SINGAPORE	SHI Plastics Machinery (S) Pte., Ltd. /Technology Center 67 Ayer Rajah Crescent #01-15 to 20, Singapore 139950 Tel:+65-6779-7544 Fax:+65-6777-9211
● THAILAND	SHI Plastics Machinery (Thailand) Ltd. /Technology Center 317 Debaratna Road, Kwaeng Bangna Nuea, Khet Bangna, Bangkok 10260 Thailand Tel:+66-2-747-4053~4056 Fax:+66-2-747-4081
● MALAYSIA	SHI Plastics Machinery (Malaysia) SDN BHD Lot AG 16, 17 & 18, PJ Industrial Park, Jalan Kemajuan, Section 13, 46200 Petaling Jaya, Selangor, D.E. Malaysia Tel:+60-3-7958-2078, 2081 Fax:+60-3-7958-2084 SHI Plastics Machinery (Malaysia) SDN BHD Penang Office No.7, Ground Floor, Jalan Kelisa Emas, Taman Kelisa Emas, 13700 Seberang Jaya, Penang, Malaysia Tel:+60-4-604-397-5725 Fax:+60-4-604-397-5726
● VIETNAM	SHI Plastics Machinery (Vietnam) LLC Floor 1A, Hong Kong Tower, No.243A La Thanh Street, Lang Thuong Ward, Dong Da District, Hanoi, Vietnam Tel:+84-24-3728-0105 Fax:+84-24-3728-0106 SHI Plastics Machinery (Vietnam) LLC Ho Chi Minh Branch 1st floor, Block C, Dat Phuong Nam Building, 241A Chu Van An Street, Ward 12, Binh Thanh District, Ho Chi Minh City, Vietnam Tel:+84-8-3514-6645 Fax:+84-8-3514-6653
● INDONESIA	PT. SHI Plastics Machinery (Indonesia) Jl. Tebet Raya No. 5B, Tebet, Jakarta 12810, Indonesia Tel:+62-21-829-3872, 3873 Fax:+62-21-828-1645
● PHILIPPINES	SHI Plastics Machinery (Phil's) Inc. Lot 2-B, No.14 Victoria Street, Cor. DSA Magallanes Village, Makati City 1332, Philippines Tel:+63-2-844-0632, 845-0877 Fax:+63-2-886-4670
● INDIA	SHI Plastics Machinery (India) Private Ltd. Unit No.22-25, 1st Floor, JMD Galleria, Sohna Road, Gurgaon, Haryana-122001, India Tel:+91-0124-2217056, 64 Fax:+91-0124-2218076

● Photographs of machines and details may differ from actual products.
● Specifications subject to change without notice for performance improvement.



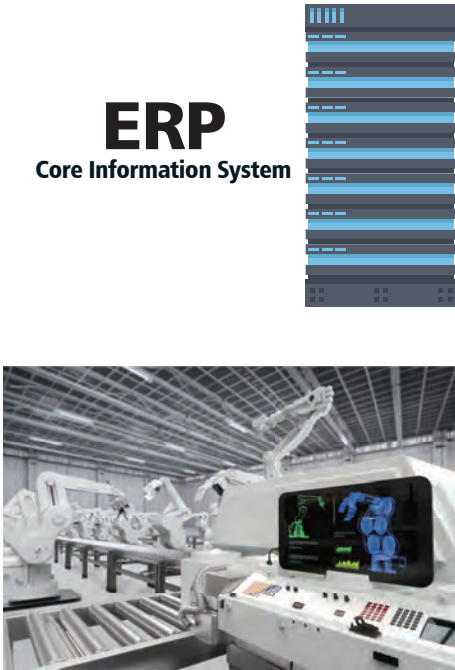
Chiba Works has acquired ISO9001 certification.

www.shi.co.jp/plastics/



Broader, deeper and easier grasp of production information.

i-Connect
Production Quality Control System



The i-Connect production quality control system is a core application for the construction of IoT at manufacturing sites, integrating information from molding machines, peripheral equipment, and various sensors. It dramatically improves monitoring and control capabilities for the whole molding cell to achieve higher-level, borderless, efficient production.



IoT refers to a system that connects various devices to the internet, providing mutual control by information exchange. Integrated control system fully incorporating IoT is attracting attention as a new method of production innovation.

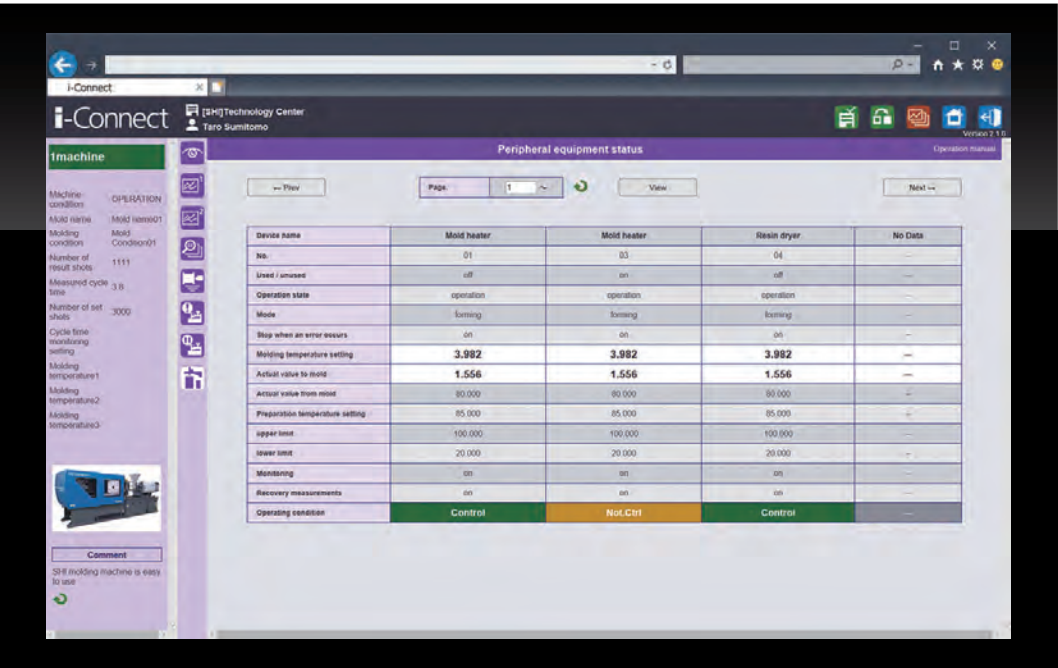
●The MES (manufacturing execution system) is to be prepared by the customer.

A broader grasp of information

Real-time understanding of the whole molding cell

Acquires data such as temperature, operating status, etc. of peripheral devices, and displays them in a list.

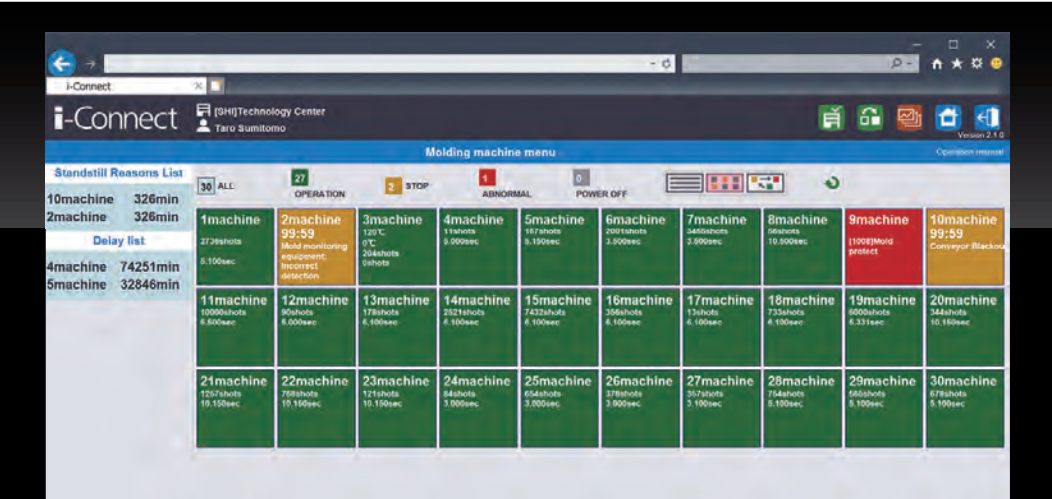
- Separate molding machine option(s) might be required for connection with peripheral devices and sensors.



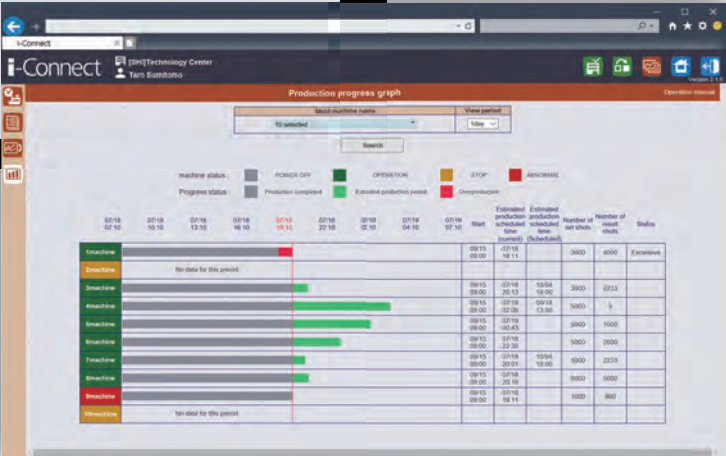
Peripheral Device Checking
Displays the operating status and numerical data for peripheral devices connected to the selected molding machine. This allows upper and lower limits to be set, and issues warning when the monitored value is out-of-range.

Intuitive control on the whole plant using an overview list

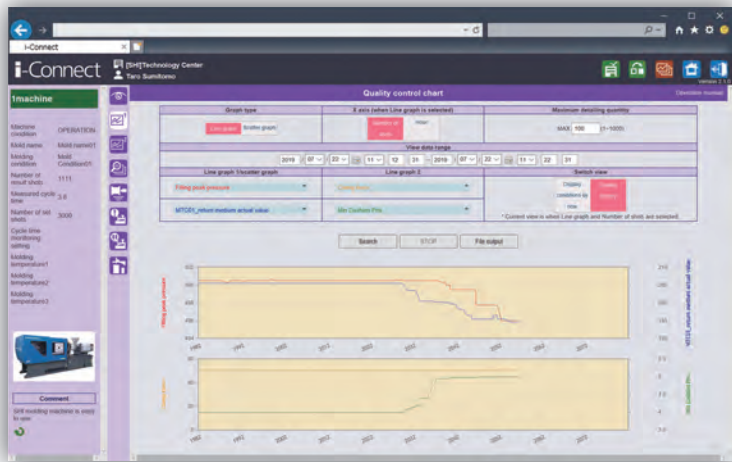
Icon placement that matches the plant layout allows understanding of the operational status of each machine in an instant. It is also possible to display a list of operation transition or production progress graph for each machine.



Molding Machine Menu
Displays all registered molding machines in each plant. The layout can be changed at any time, and the background image can also be set (floor layout etc.).



Production Progress Graph
The status and progress of the selected molding machines are displayed using bar graphs.

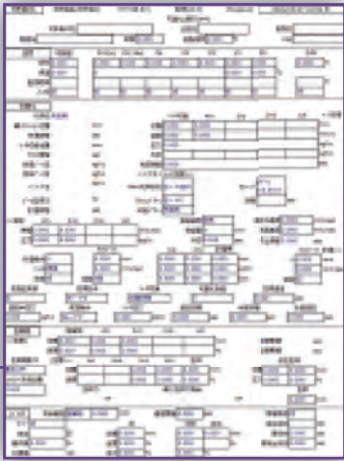


Quality Control Chart
Understanding of the relationship between the actual temperature of the mold temperature controller and the filling peak pressure of the molding machine is also possible by comparing graphs.

A deeper grasp of information

Improved traceability

By specifying time frames, detailed chronological data such as transition of operational status and correlations can be checked. Tracing machine status and molding conditions at a particular time from a molded article improves product traceability.

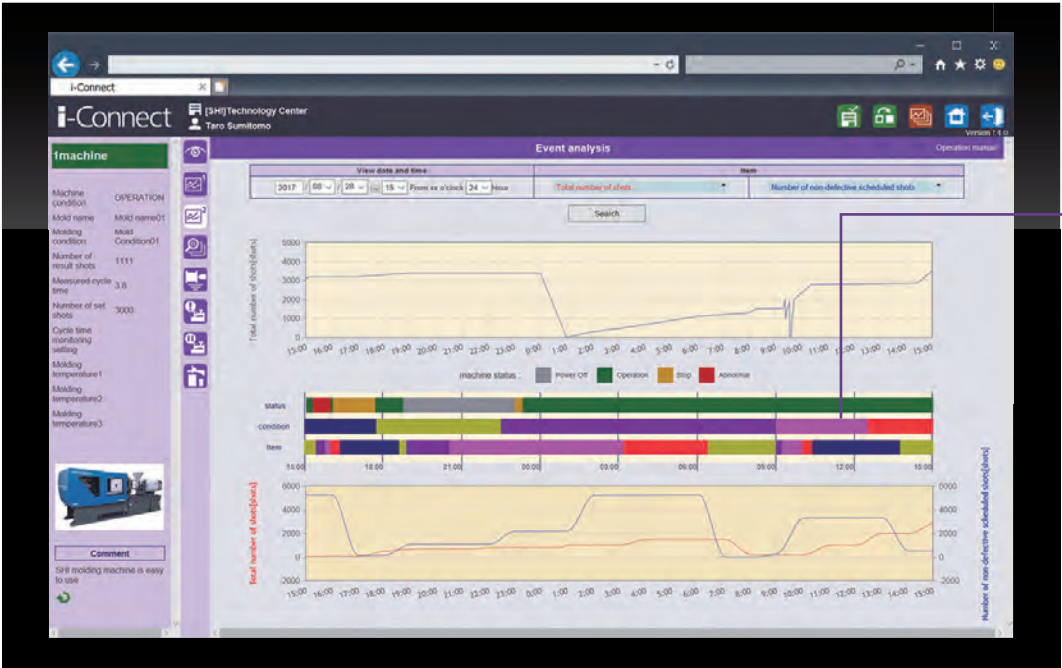
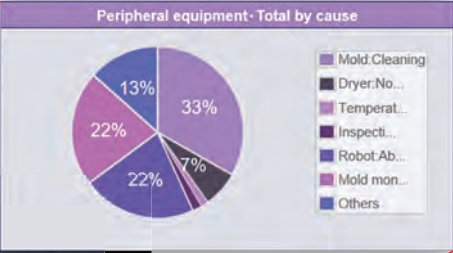


Calling and verification of molding conditions are possible.
● Image is blurred on purpose.

In-depth history management

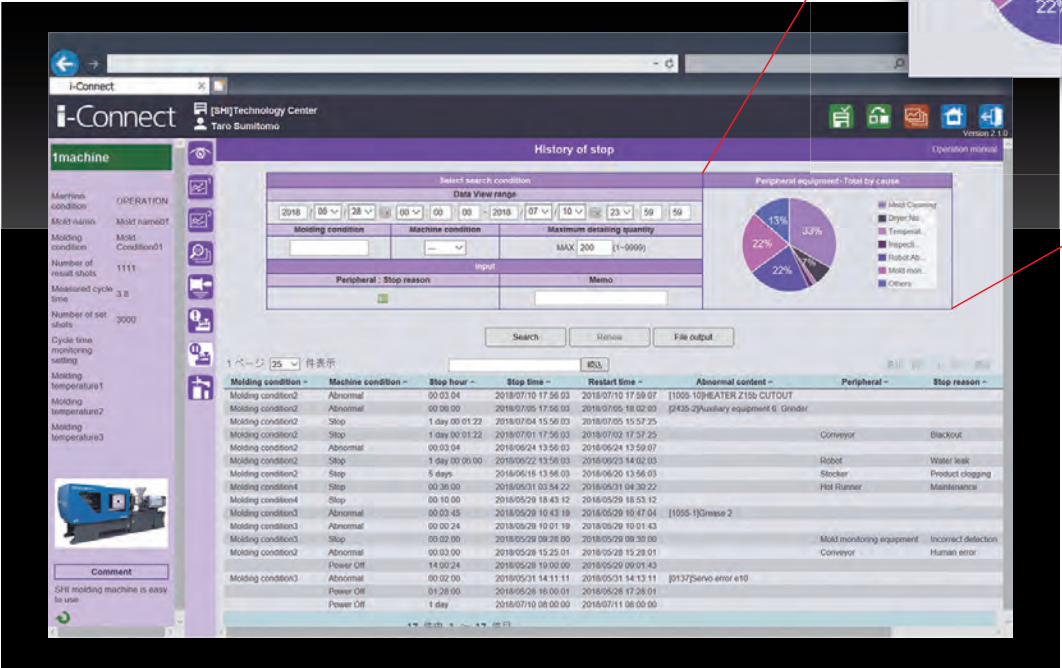
Using stoppage history, alarm history, and molding conditions history allow analysis of factors correlated with defects, which can lead to improvements in production conditions.

Allows input and analysis of the causes of stoppage.



Event Analysis

Molding machine status, items, and condition alterations are displayed on a graph, and events searching is possible.



Stoppage History

Displays the stoppage history of the selected molding machine.

An easier grasp of information

Speedy error handling

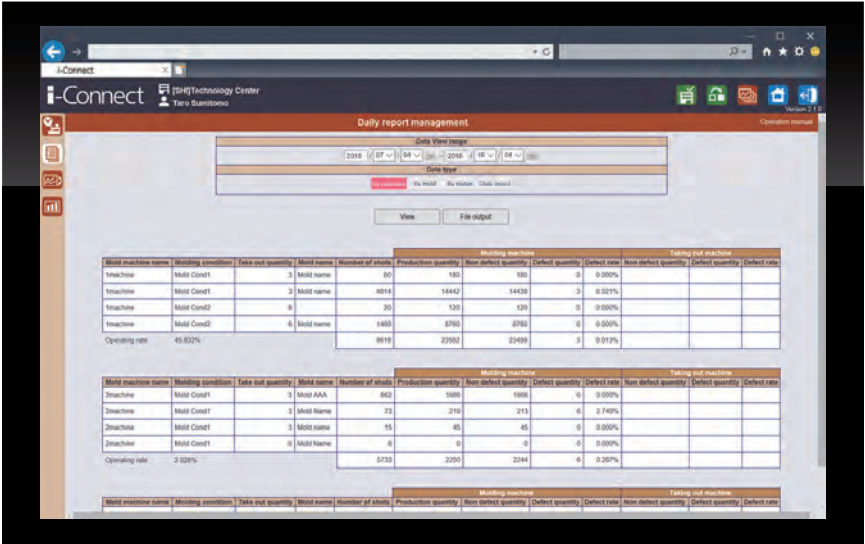
Linkage of alarm number to troubleshooting.
This enables rapid on-site error handling.



●This feature applies only to SE-EV, SEEV-A, and SEEV-A-HD series.



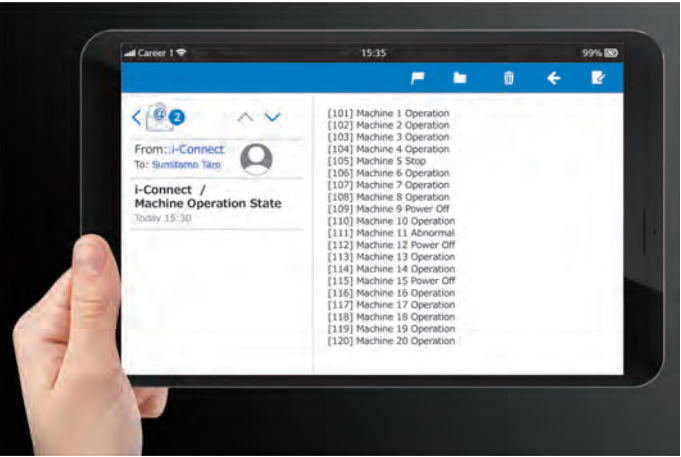
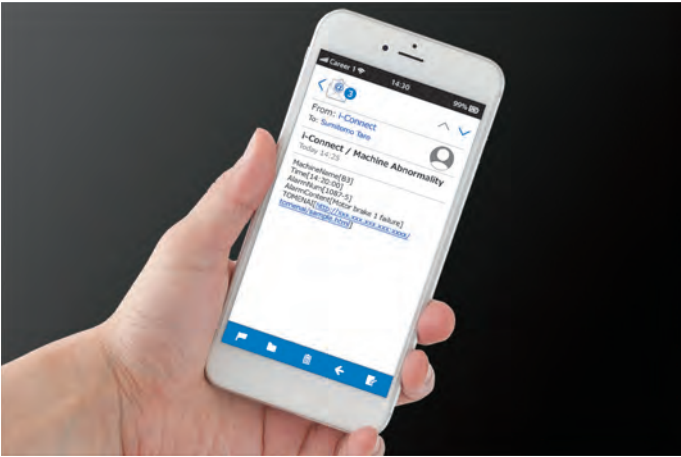
Alarm History
Displays the alarm history of the selected molding machine.



Daily Report Management
Displays daily reports based upon operating data of molding machines.

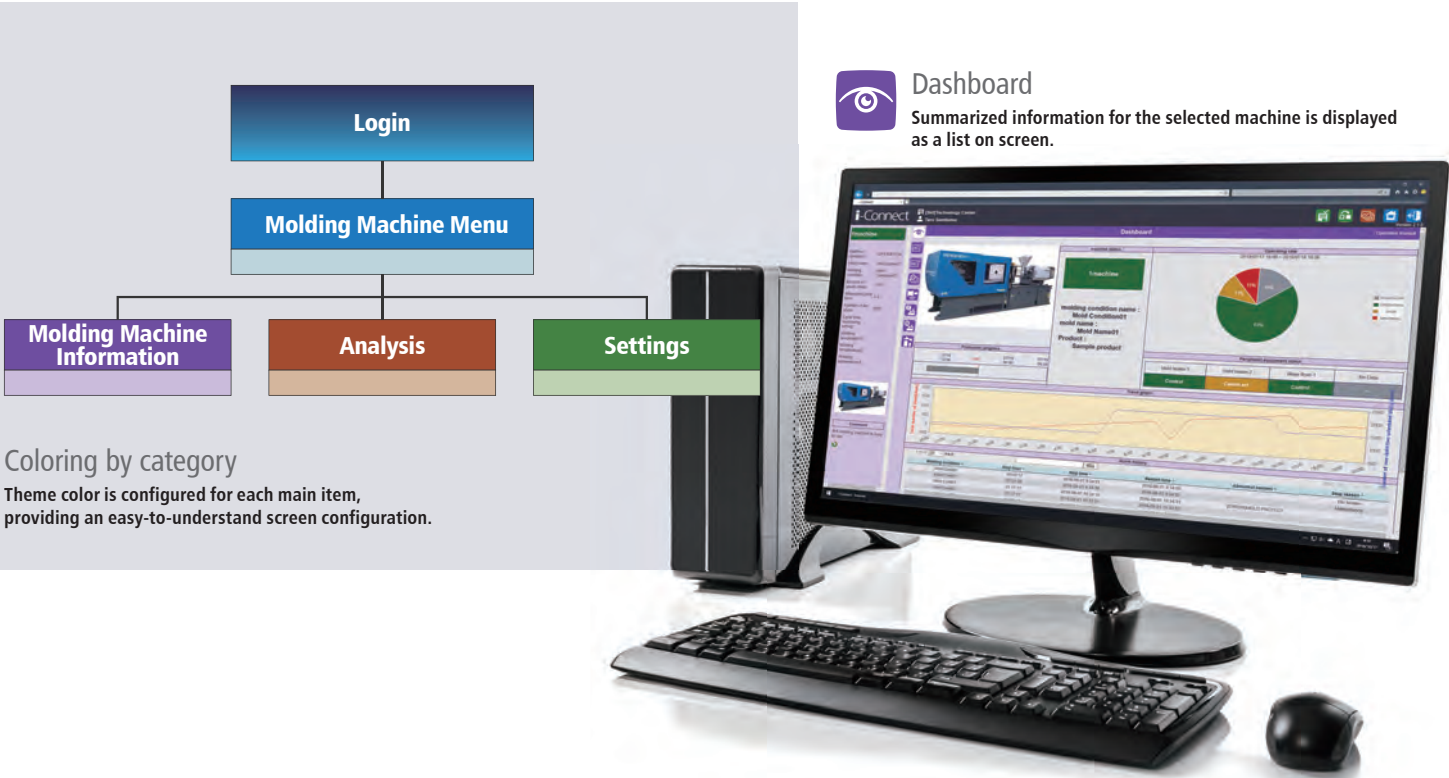
Real-time access to information away from the plant

Real-time notifications of operational status and errors can be sent to devices such as smartphones and tablets, even at off-site location.



Simple operation

Browser-based application means that there is no installation required.
The graphical screen design supports intuitive, speedy operation.



Accurate, simple creation of daily reports

Automatically summarizes daily reports for each molding machine, and exports these as CSV file through simple operation.

Linking work sites with administrators and conference rooms

As long as there is a device, anyone can obtain an understanding of the real-time production status from anywhere, at any time. Production sites centered information networks are establishing a new method for quality control.



Main Specifications

Molding machine data			Basic settings, user settings, factory management settings, system management settings		
Icon	Name	Function	Icon	Name	Function
	Dashboard	Displays the molding machine status and rate of operation		User Management	Manages addition and removal of new users, password setting, and language selection
	Quality Control Chart	Displays data of the molding machine in graphical form		Authority Management	Adds and deletes accessible function, molding machine menu screen display item, as well as operational authority
	Event Analysis	Graphical display of molding machine status, items, and condition alterations Search event		IP Address Diagnosis	Checks IP address and communication connection of connected molding machines
	Detailed Performance	Displays actual value for the specified display items (up to 10 items)		Email Settings	Settings for email notification of operational status and abnormality occurrence, etc.
	Molding Conditions History	Displays the alteration history of molding conditions		User-specific Settings	Sets display language and display unit for each user
	Alarm History	Displays the alarm history		Molding Machine Configuration	List display, addition, change, and deletion of registered molding machines
	Stoppage History	Displays the stoppage history		Uploads for Each Plant	Registers and updates background image file for each plant
	Peripheral Device Confirmation	Displays the status of peripheral devices		Server Status Check	Displays server time, free space, utilization rate, memory usage status, CPU usage status, etc.
Data analysis				Client Status Check	Displays molding machine client information (molding machine name, IP address, drive remaining capacity, connection status, etc.)
	Operation Transition	Bar graph display of the operational status of the selected molding machine		Data Management	Backs up and restores the database
	Daily Report Management	Displays daily reports based upon operating data of molding machines			
	Overall Comparison	Graph display of actual value and configuration value transition for the selected molding machine			
	Production Progress Graph	Displays status and production progress for selected molding machines using a bar graph, allowing confirmation of production status			

System configuration and requirements

- Tested browsers and versions: Internet Explorer 11.0/Firefox 61.0.1/Chrome 68.0
- Communications environment: A wired connection is required between the main hardware (computer) and molding machines, to ensure stable connection. Reference devices such as laptop computers and tablets may use wireless connections.

● Internet Explorer is a registered trademark of Microsoft. Firefox is a registered trademark of Mozilla. Chrome is a registered trademark of Google.