

# Relationship between Sumitomo Heavy Industries Group and Society

Oil refineries, shipbuilding yards, automobile factories, semiconductor industry and other industrial settings as well as the settings of daily life such as households, hospitals, elevators and escalators: the products of the Sumitomo Heavy Industries Group are involved with all these areas. Here, we introduce several products that take account of the global environment as well as the people who use them.

**1 Warehouse**


**▶ Forklift**  
Satisfies all workability, comfort, economic efficiency and safety standards.  
We have an abundant lineup from 0.9 to 5.0 tons.

**▶ Automated warehouse system**  
Numerous achievements in a wide-ranging industry  
Streamlines tasks with completely automated management of 190,000 packing cases.



**2 Sewage Treatment Plants**

**▶ Diffusion equipment**  
Delivering energy savings by reducing energy consumption at sewage treatment plants  
Capable of reducing power usage by creating bubbles that are finer than those of conventional diffusers for efficient delivery of oxygen.



**8 Hospitals**

**▶ Cyclotron for PET**  
We continue to lead in tracer RI pharmaceutical systems for PET systems.  
Discovers cancers of less than 1 cm in the early stages.

**▶ Proton cancer therapy system**  
More compact than the conventional system  
Capable of pinpointing and picking off cancer cells, outstanding in terms of its gentle therapy effect on the patient's body.

**▶ Cryocooler for MRI systems**  
The simple structure saves labor at use.  
Cooling to the ultralow temperature of -269°C, this is the core of MRI equipment.


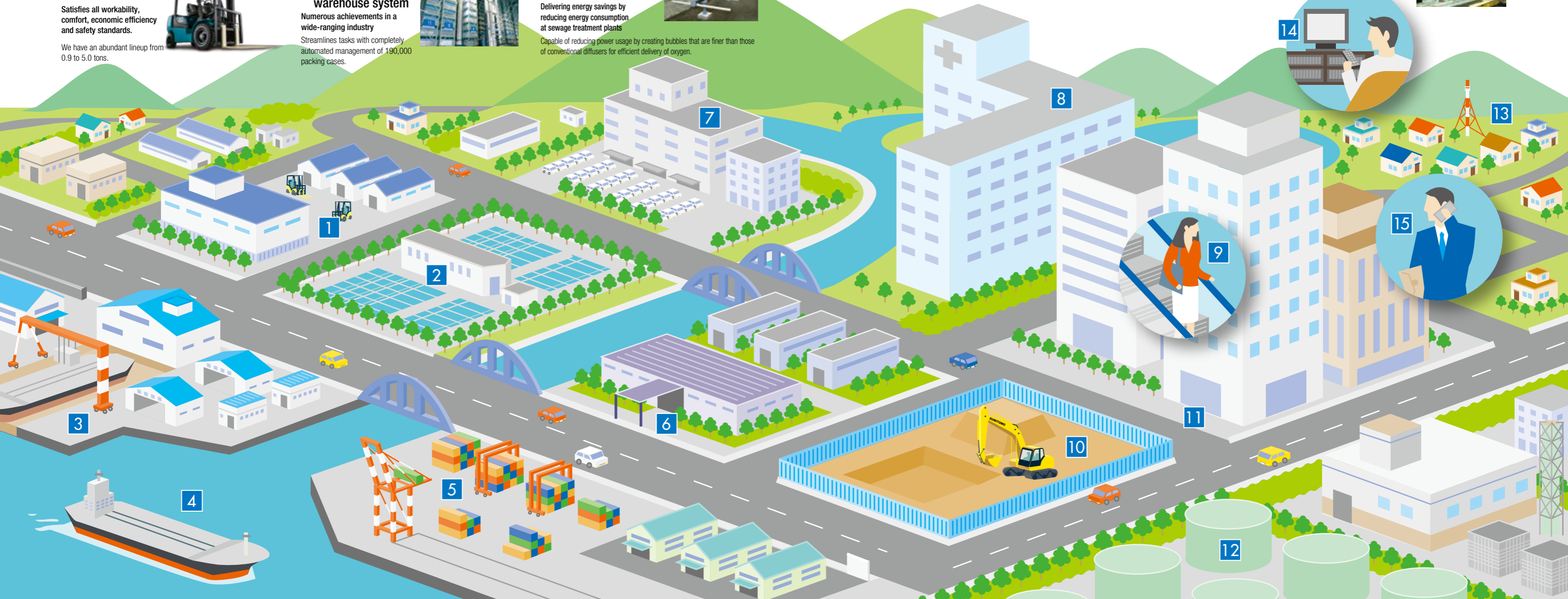


**13 Power Generating Facilities**

**▶ Biomass boiler**  
Contributes to the global environment by utilizing diverse fuels.  
Creates power and steam from a variety of fuels including biomass fuels where high-efficiency use has been difficult in the past.

**▶ Dry-type desulphurization denitrification system**  
Contributes to processing SOx, NOx and dioxins in exhaust gas.  
Treats exhaust gas without using water.

**▶ Steam turbine**  
Advanced technologies with confidence and results that respond to the needs of the times.  
We are proud to have delivered about 6,500 turbines to approximately 80 countries worldwide.


**3 Shipbuilding Yards**

**▶ Large crane**  
Contributes to optimization of shipbuilding.  
Helps raise the efficiency of shipbuilding operation with a lifting capacity of 1,200 tons.




**5 Harbors**

**▶ Container transfer crane**  
Resolves environmental issues caused by heavy fuel consumption, black smoke and other exhaust gases.  
By adopting a hybrid system, we have kept maximum engine output to about 1/3, reduced fuel consumption by approximately 60%, and reduced exhaust gas.




**4 Sea**

**▶ Oil tanker**  
Implementing energy conservation on board ships  
Our proprietary technologies deliver energy-conserving performance at the international top level.



**6 Semiconductor Factories**

**▶ Ion implantation system**  
Delivering high productivity with high precision and high quality  
Compatible with 20 nm ultrafine LSI. Implants ion in wafers.



**7 Automobile Factories**

**▶ Precision speed reducers**  
No wobbling at inversion  
Widely used in fields where precise control is required such as welding robots, etc.


**▶ Forging press**  
Largest in the world at 16,000 tons  
Plays a part in a range of forging scenarios from compact machinery to the world's largest machines.



**9 Elevators and Escalators**


**▶ Speed reducers**  
A history of trust spanning more than half a century  
The compact design trims weight by 30%.

**2 Sewage Treatment Plants**



**10 Construction Sites**

**▶ Hydraulic excavators**  
We contribute to reducing the burden on the environment worldwide.  
Delivering a 20% improvement in fuel consumption.  
First construction machinery to receive Energy Conservation Grand Prize (FY2007).



**11 Underground Parking Lots**

**▶ Mechanical parking garage**  
Maximum effective utilization of limited space  
Facilitating faster removal times and higher storage capacity (about 170 vehicles per unit).




**12 Oil Refineries**

**▶ Coke drums**  
Responds to wide-ranging customer needs with a sophisticated quality assurance system.  
At oil refineries, the coke drums are capable of processing heavy oil in the most efficient manner.



**14 Televisions and PCs**

**▶ Semiconductor and liquid production equipment**  
Delivering high positioning precision on the order of nanometers  
We handle the XY stages used for precision positioning of FPD and semiconductor manufacturing equipment.



**15 Mobile Phones, DVDs and CDs**

**▶ Plastic injection molding machine**  
Approaching next-to-zero waste, defects or difficulty  
Compatible with precision micro-molding.

